



CATALOGO FT 45 PIANO PORTE INTERNE

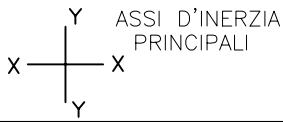
Sistemi *Global*
FRESIALUMINIO[®]
PROFILI PER SERRAMENTI

VIA REISS ROMOLI 267 - 10148 - TORINO

TEL.011/22.50.211 - FAX 011/22.50.290

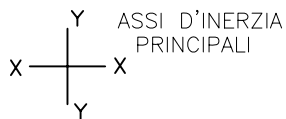
<http://www.fresialuminio.it>

e-mail: global@fresialuminio.it



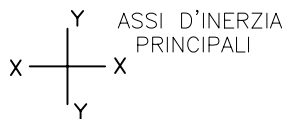
ELENCO PROFILI

SIGLA	SAGOMA	DESIGNAZIONE	PESO Kg/ml	perimetro mm.	sup. in vista mm.	Jy cm. ⁴ Jx cm. ⁴	RIFFERIMENTO PAGINA
4006		PROFILO PER BILICO	0.651	330	79	6.62 -	9
4021		FERMAVETRO DA 29.9 mm	0.225	139	44	- -	13
4022		FERMAVETRO DA 25 mm	0.221	137	39	- -	13
4023		FERMAVETRO DA 18 mm	0.220	137	32	- -	13
4024		FERMAVETRO DA 12 mm	0.221	137	26	- -	13
4043		ZOCCOLO	1.739	436	233	- -	8
4044		FASCIA DA 138 mm	1.816	420	256	19.34 110.44	8
4045		FASCIA DA 99 mm	1.496	342	178	14.03 40.30	8
4050		TELAIO FISSO α Z LEGGERO	0.662	312	91	- -	7
4051		TELAIO FISSO α T TELAIO MOBILE α T APERTURA ESTERNA	0.691	245	82	6.85 3.29	6
4052		TELAIO FISSO α Z TELAIO MOBILE α Z	0.691	358	77	7.29 -	6
4053		TELAIO FISSO α L LEGGERO	0.478	253	59	- -	7
4054		TELAIO FISSO α T CAMERA DOPPIA TELAIO MOBILE α T APERTURA ESTERNA	0.866	278	115	9.66 9.39	6
4055		TELAIO FISSO α Z CAMERA DOPPIA TELAIO MOBILE α Z CAMERA DOPPIA	0.866	278	115	10.01 -	6



ELENCO PROFILI

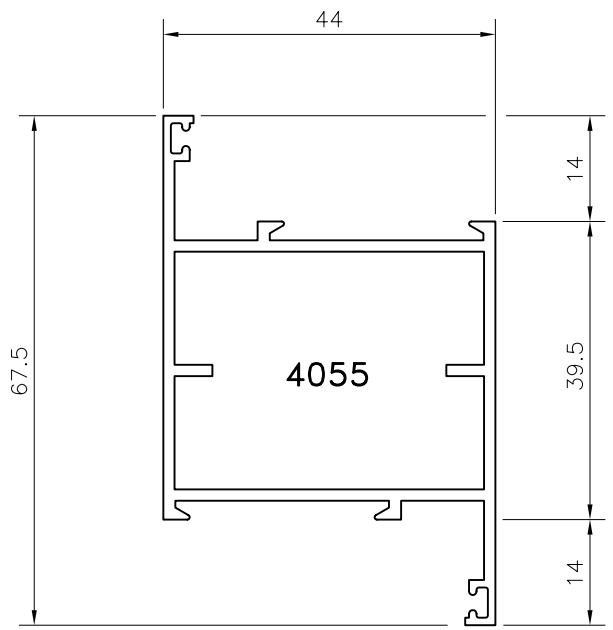
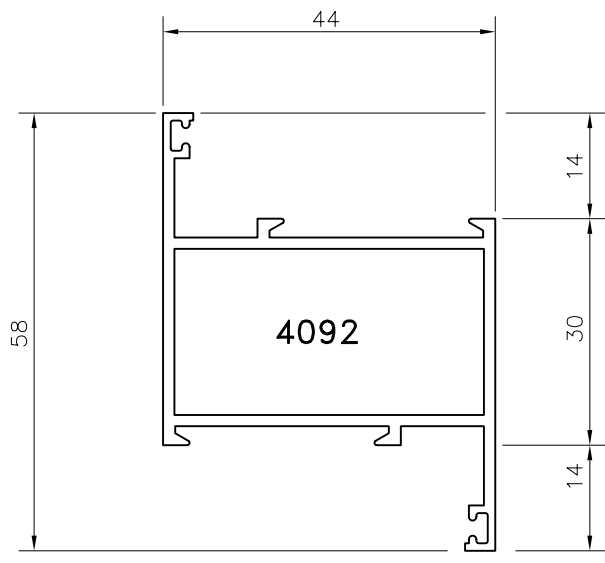
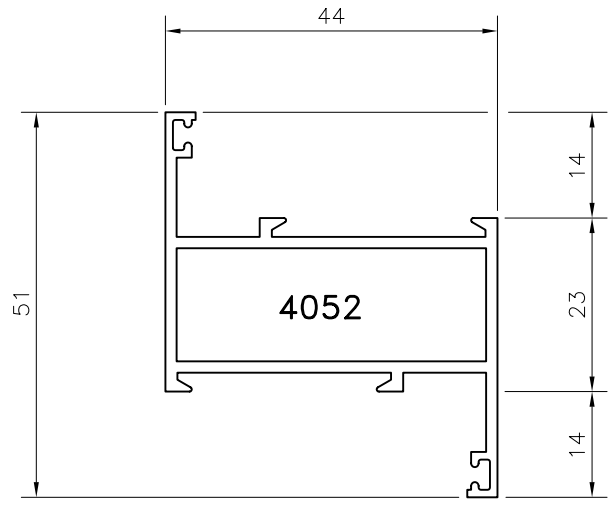
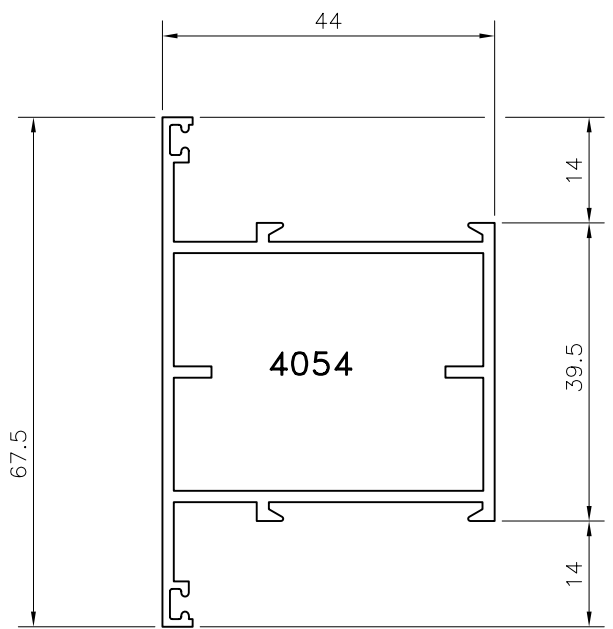
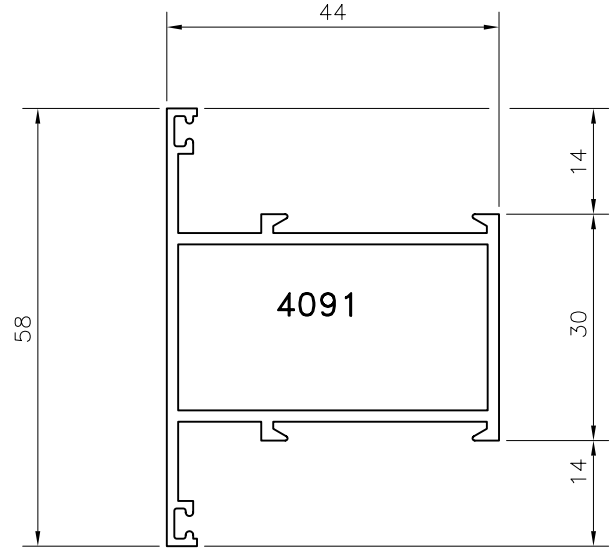
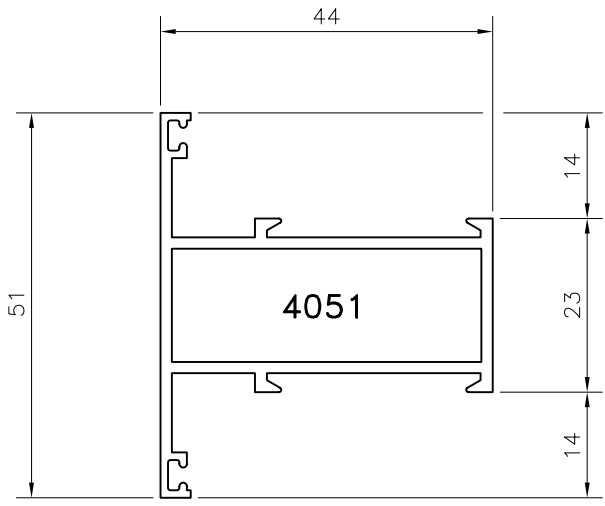
SIGLA	SAGOMA	DESIGNAZIONE	PESO Kg/ml	perimetro mm.	sup. in vista mm.	Jy cm. ⁴ Jx cm. ⁴	RIFERIMENTO PAGINA
4056		MONTANTE PER UNIONE PARETI A 90°	0.693	161	71	- -	13
4063		TELAIO FISSO α L CAMERA DOPPIA	0.755	217	136	- -	7
4070		FERMAVETRO DA 4 mm	0.175	111	18	- -	13
4071		BATTUTA RIPORTATA CON PORTA SPAZZOLINO E GOCCIOLATOIO	0.392	192	39	- -	9
4073		INVERSIONE DI BATTUTA	0.577	187	40	4.82 -	7
4082		RIPORTO CENTRALE	0.522	264	65	5.25 -	7
4090		TELAIO FISSO PORTE INTERNE	1.584	572	146	- -	10
4091		TELAIO FISSO α T MAGGIORATO TELAIO MOBILE α T APERTURA ESTERNA	0.760	259	94	7.83 5.41	6
4092		TELAIO FISSO α Z MAGGIORATO TELAIO MOBILE α Z MAGGIORATO	0.760	259	96	8.24 -	6
4093		TELAIO FISSO α L MAGGIORATO	0.649	198	117	- -	7
4094		TELAIO MOBILE PORTE INTERNE	0.818	314	110	- -	12
4095		FASCIA PORTE INTERNE	1.230	358	205	- -	12
4097		PORTA VETRO DA 5 mm	0.304	168	42	- -	12
4098		PORTA VETRO DA 20 mm	0.287	165	30	- -	12
40172		PROFILO α L SENZA CAMERA	0.295	153	26	- -	9



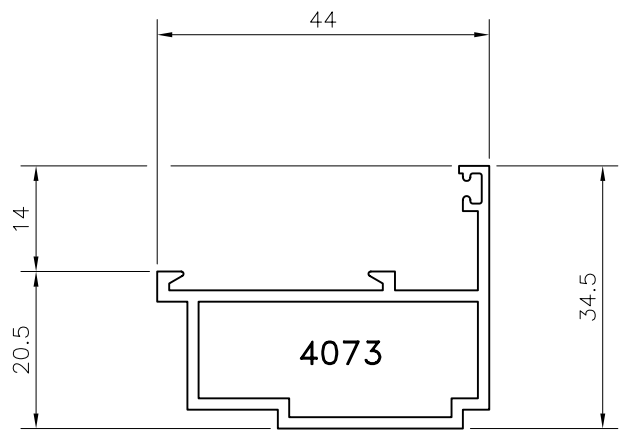
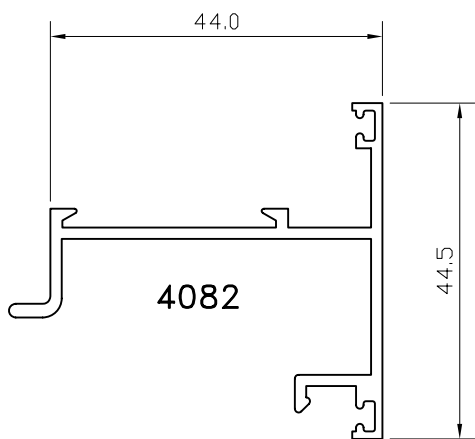
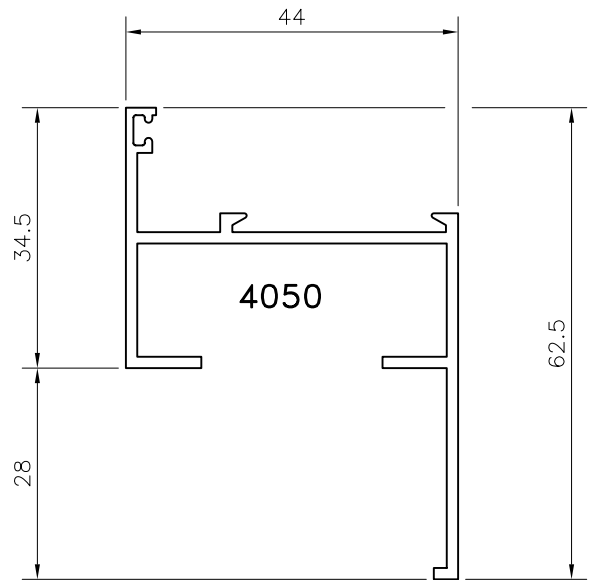
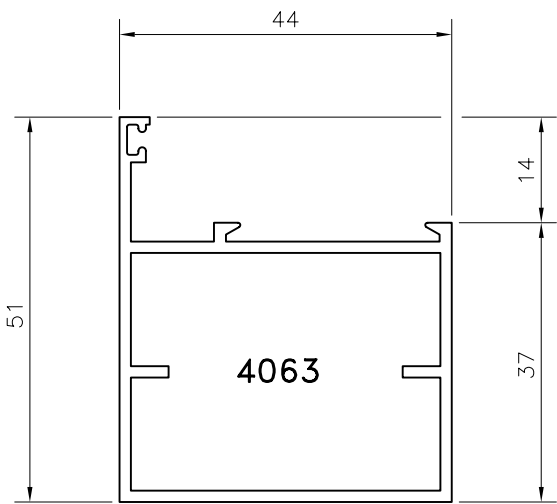
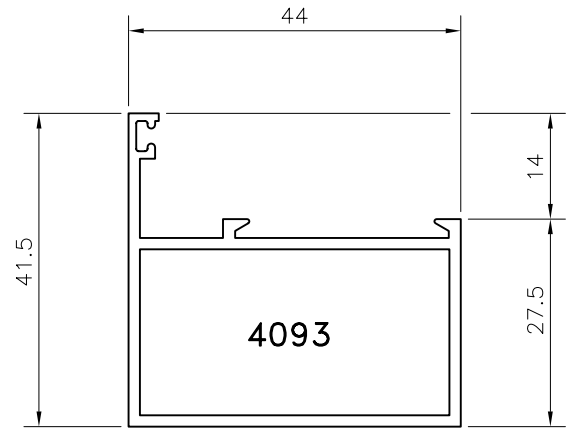
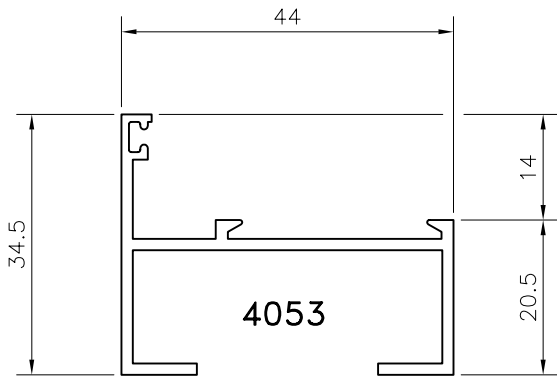
ELENCO PROFILI

SIGLA	SAGOMA	DESIGNAZIONE	PESO Kg/ml	perimetro mm.	sup. in vista mm.	Jy cm. ⁴ Jx cm. ⁴	REFERIMENTO PAGINA
40110		PORTA SPAZZOLINO PORTE A VENTOLA	0.257	137	54	—	9
40151		MONTANTE / TRAVERSO (Con sede porta vite)	0.772	247	82	—	8
40174		ZOCCOLO RIPORTATO	1.387	320	173	—	9
40175		CHIUDI BATTUTA VETRO	0.257	162	54	—	9
40176		PORTA SPAZZOLINO	0.274	126	8	—	9
40186		PROFILO COMPENSATORE	0.493	232	60	—	13
40187		PROFILO "H" PER GIUNTI DI DILATAZIONE	0.745	282	120	—	13
40190		TELAIO PORTE INTERNE (Rotazione anta 180°)	1.355	503	140	—	10
AS 48193		IMBOTTE PICCOLO	0.682	346	130	—	11
AS 48194		IMBOTTE MEDIO	0.846	406	160	—	11
AS 48195		IMBOTTE GRANDE	0.909	466	190	—	11
AS 48196		PROLUNGA PER IMBOTTE	0.625	304	94	—	12

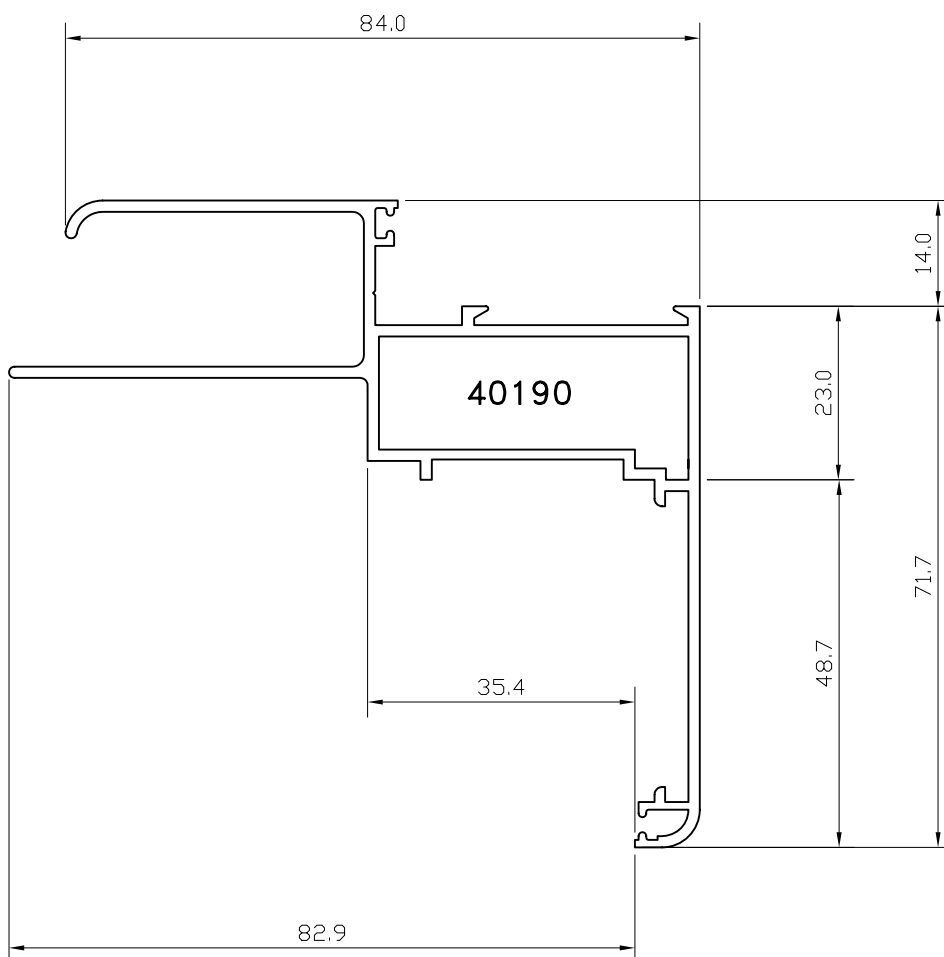
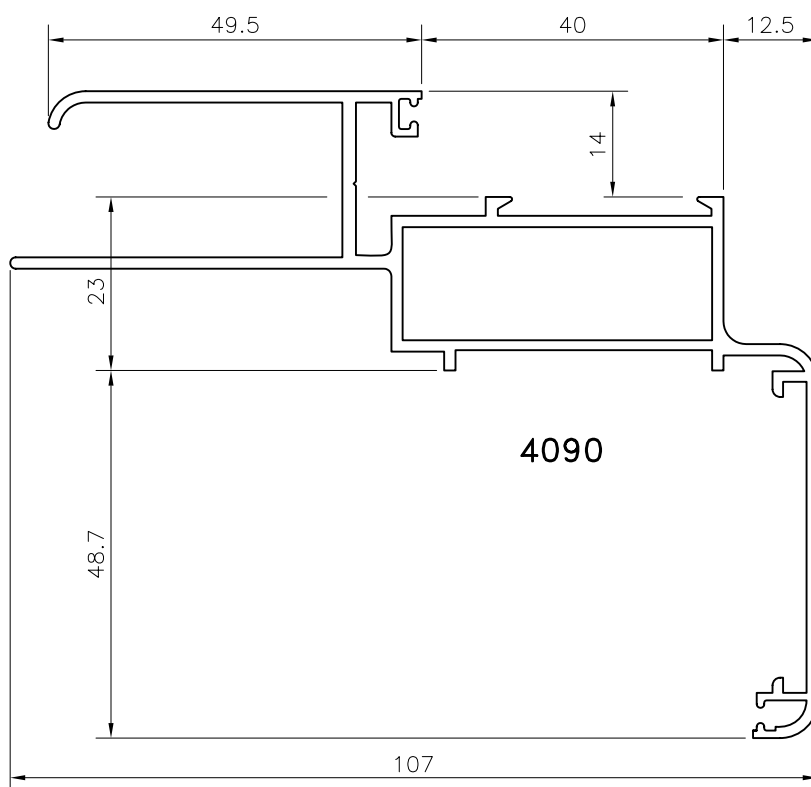
SAGOMA PROFILI FT45



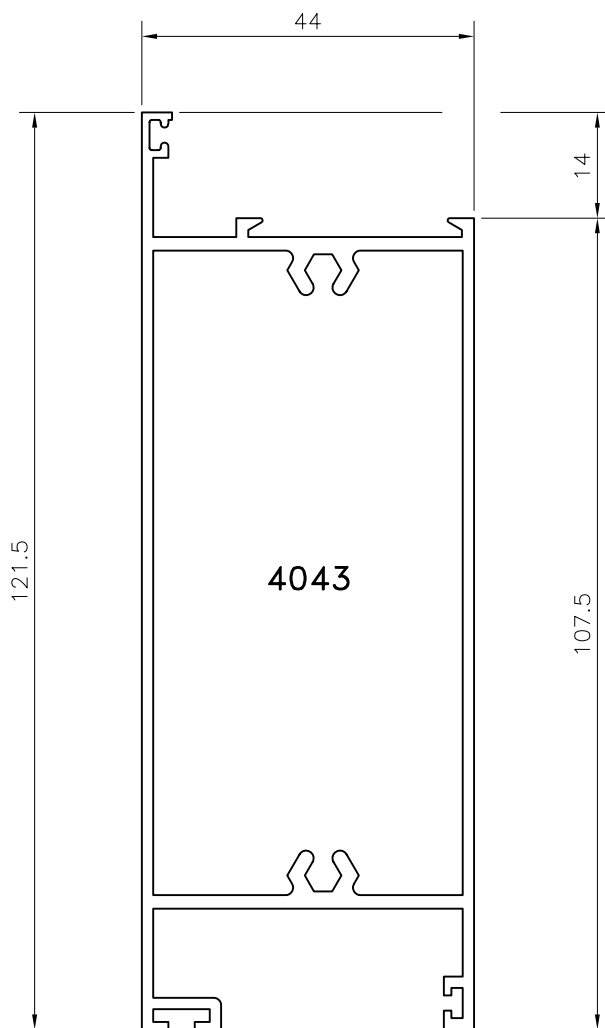
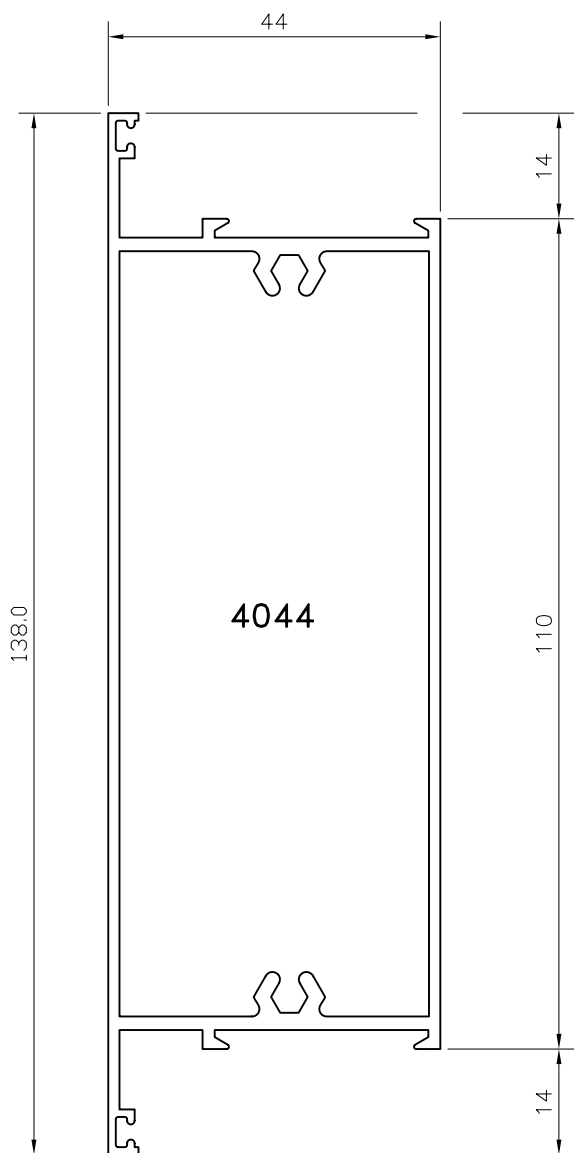
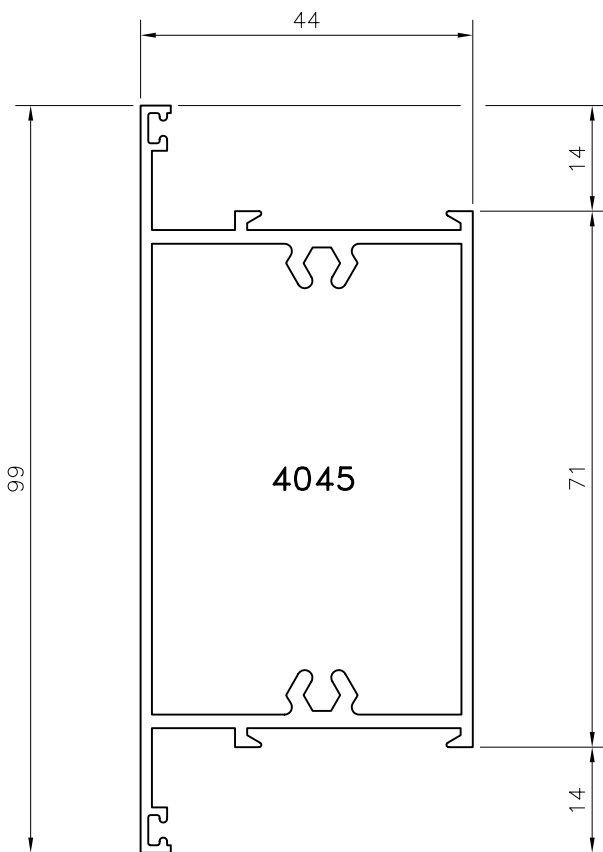
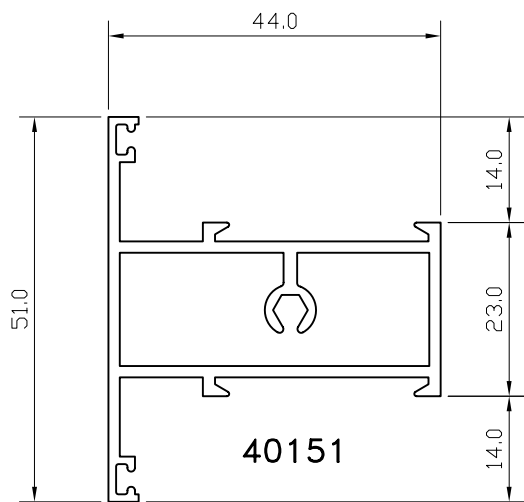
SAGOMA PROFILI FT45

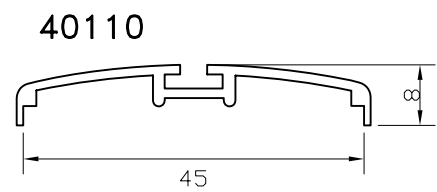
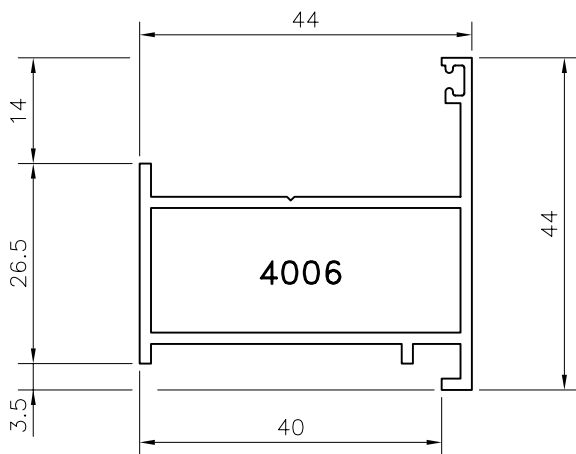
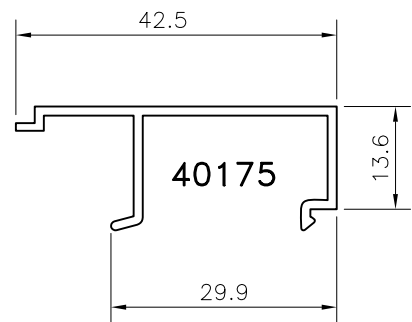
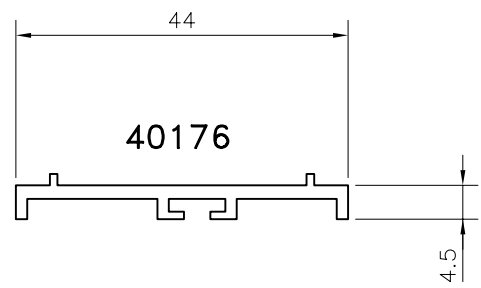
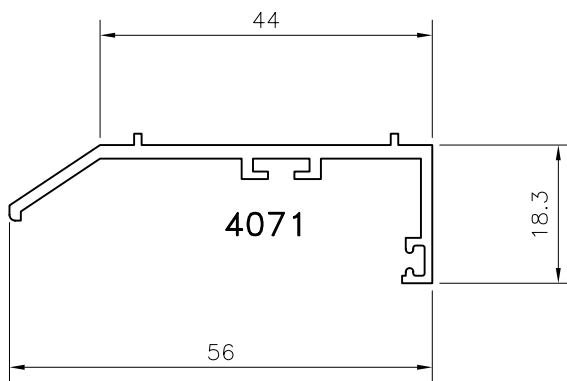
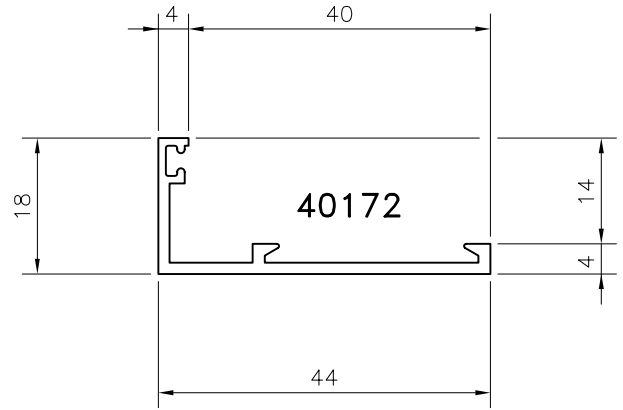
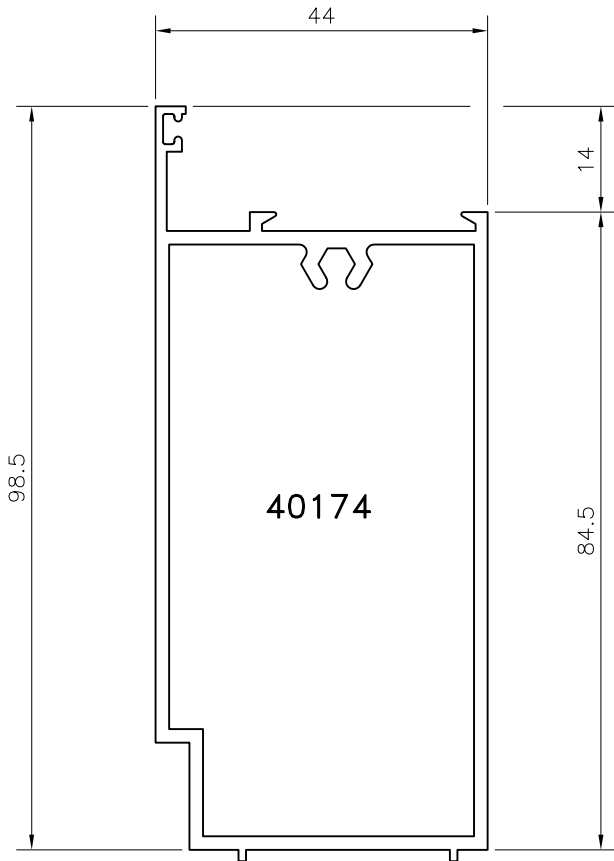


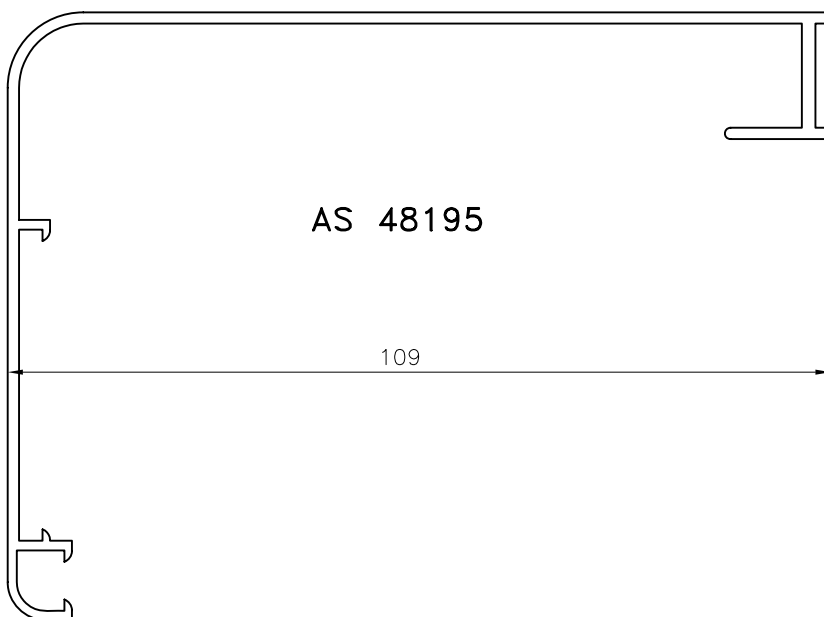
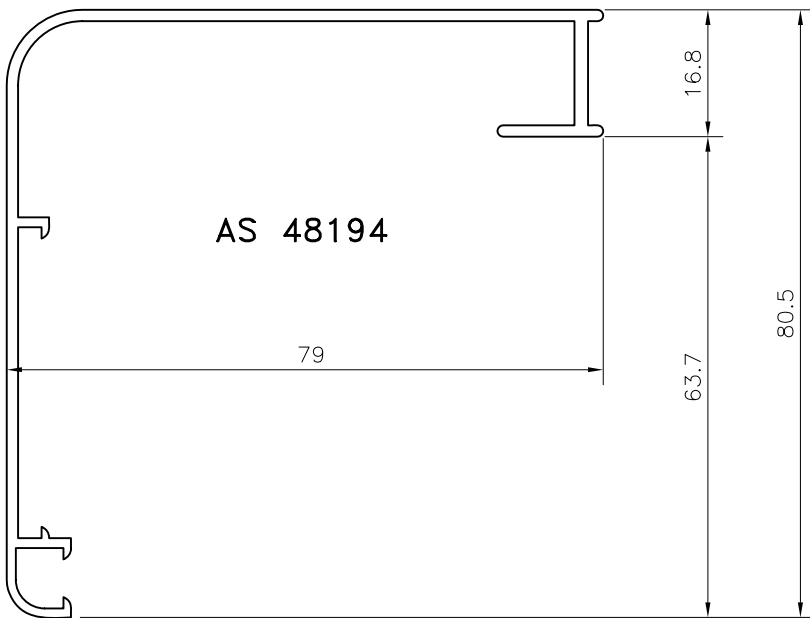
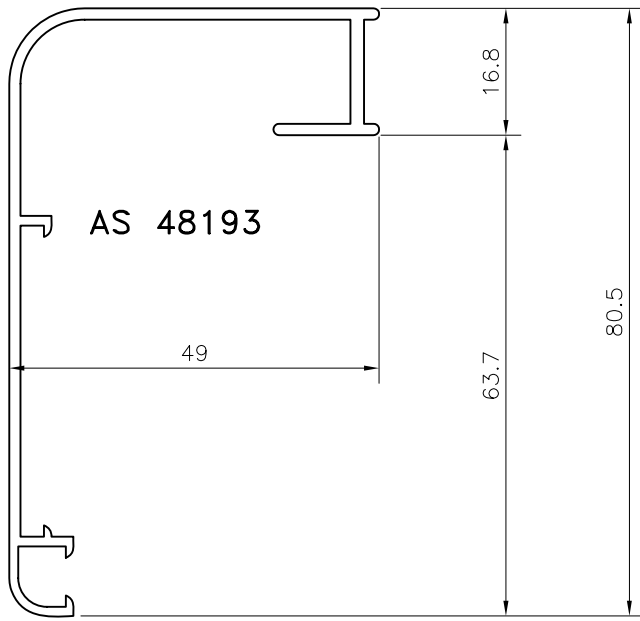
SAGOMA PROFILI FT45



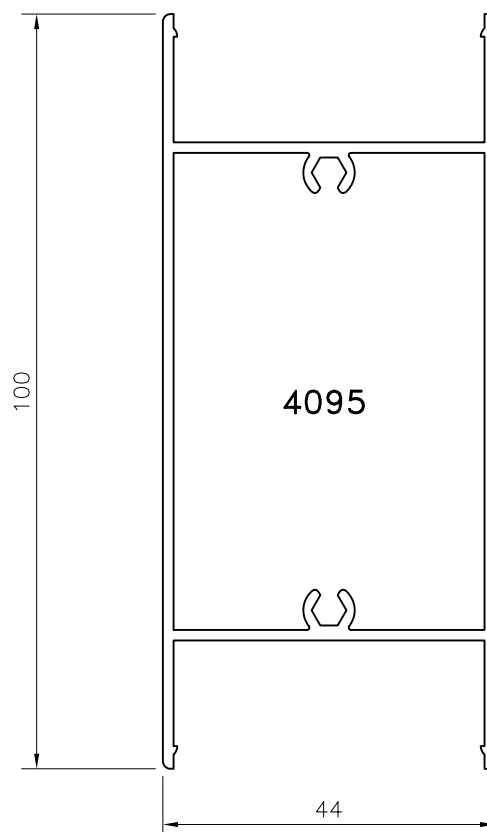
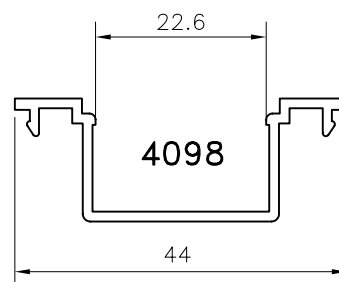
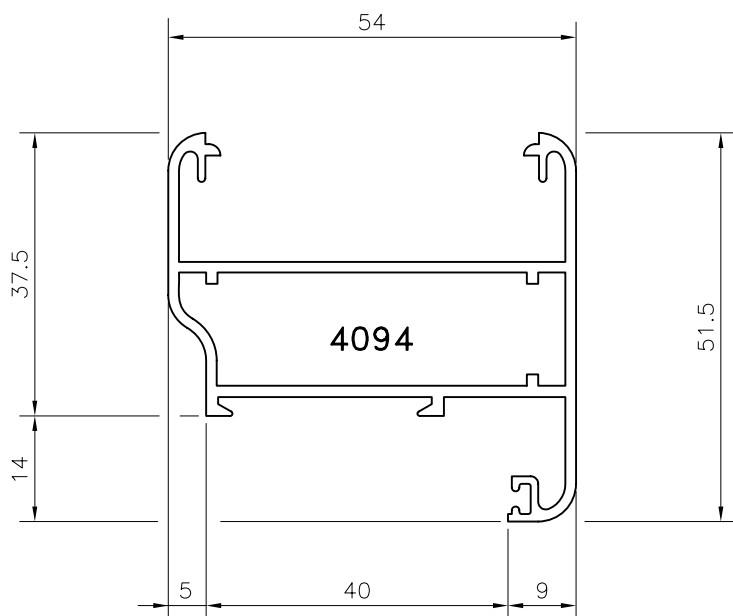
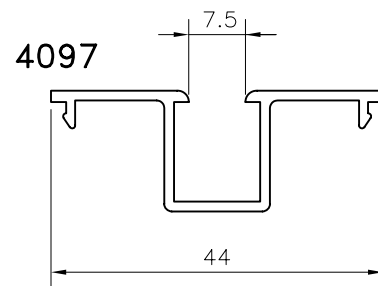
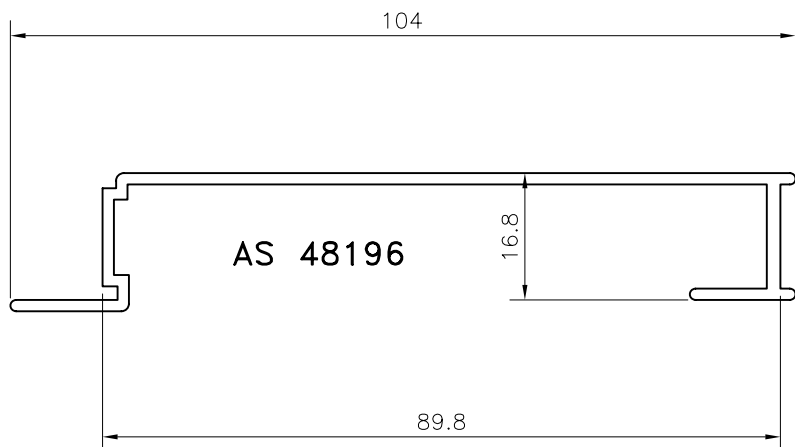
SAGOMA PROFILI FT45

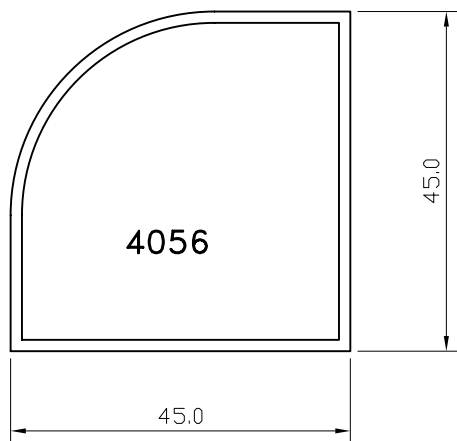
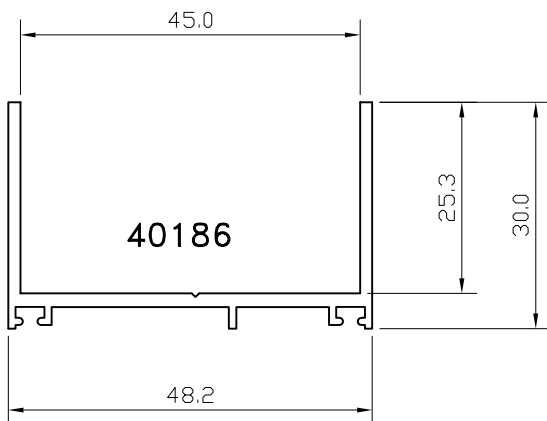
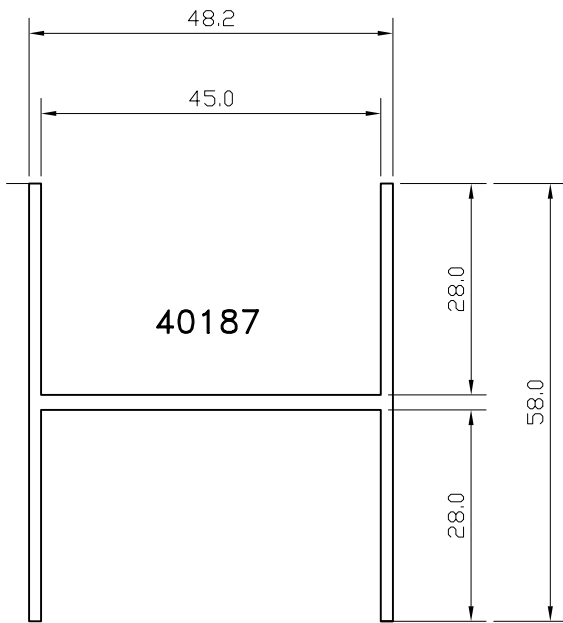






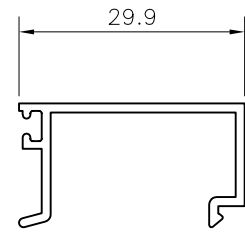
SAGOMA PROFILI FT45



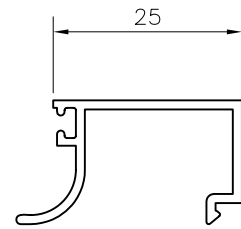


Fermavetri

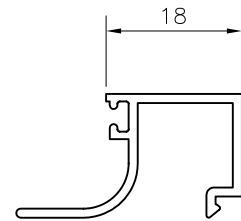
4021



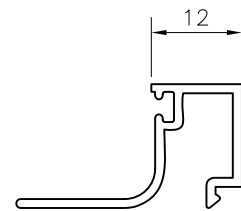
4022



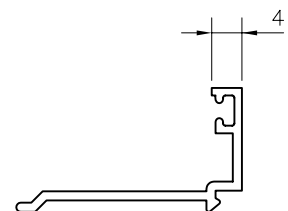
4023



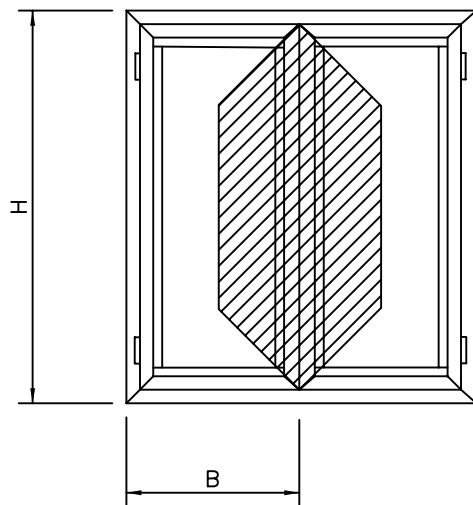
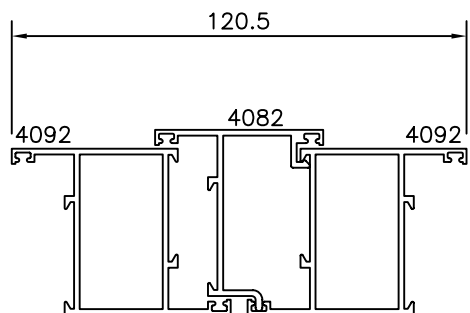
4024



4070



CURVE LIMITE DI UTILIZZO

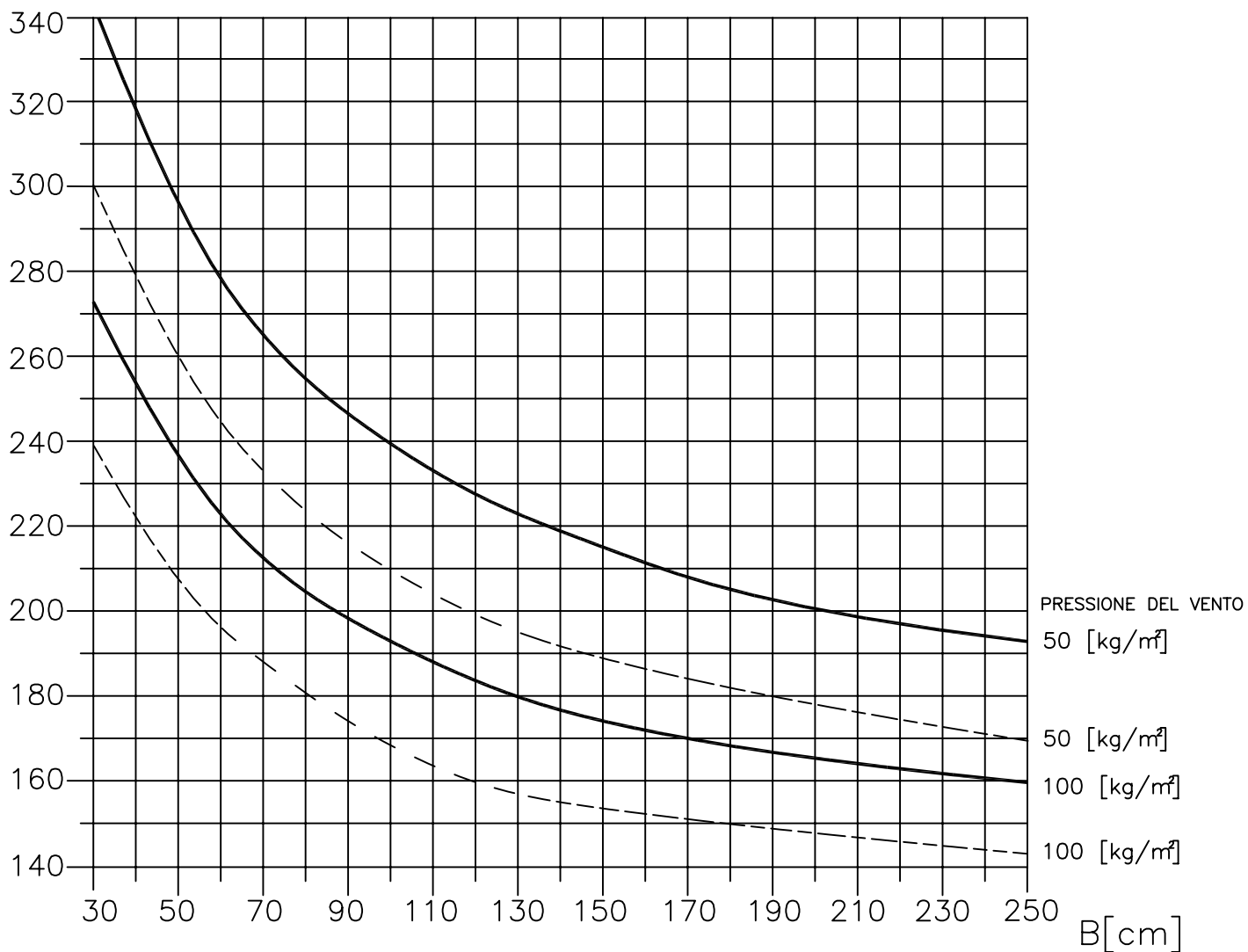


$J_{TOT.} = 21.73 \text{ cm}^4$

VERIFICARE CHE LA FRECCIA DEL PROFILO
SIA COMPATIBILE COL VETRO IMPIEGATO

H[cm]

----- freccia max 1/300
————— freccia max 1/200



ELENCO ACCESSORI

ARTICOLO	DENOMINAZIONE
OTT 101	SQUADRETTA ACCIAIO
OLC 0202	SQUADRETTA ALLUMINIO
FBC 2015	CERNIERA
OET 2016	CERNIERA III ANTA
FBC 2017	CERNIERA CON PIASTRINO
OET 1475	TAPPO INCONTRO T RIPORTO 2-3 ANTE
FBC 2222	SQUADRA ALLINEAMENTO PORTE INTERNE
OFV CR610B	VITI CERNIERA
ACG 20104	CREMONESE MAXIMA INTERASSE 130 mm
OGS 2379	BLOCCHETTO GUIDA ASTE
OGS 2118	CATENACCIO A LEVA PLASTICA
OGS 2108	CATENACCIO A LEVA ALLUMINIO
OGS 2311	INCONTRO ASTE
OGS 2001	CERNIERA WASISTAS
OPR 145-02	REGOLO A MURO
OCU 123136	CAVALLOTTO A UNGHIA
OMI 18N	GUARNIZIONE BATTUTA
OMI 26N	GUARNIZIONE BATTUTA
OMI 28N	GUARNIZIONE VETRO
OMI 29N	GUARNIZIONE VETRO

SERRATURE

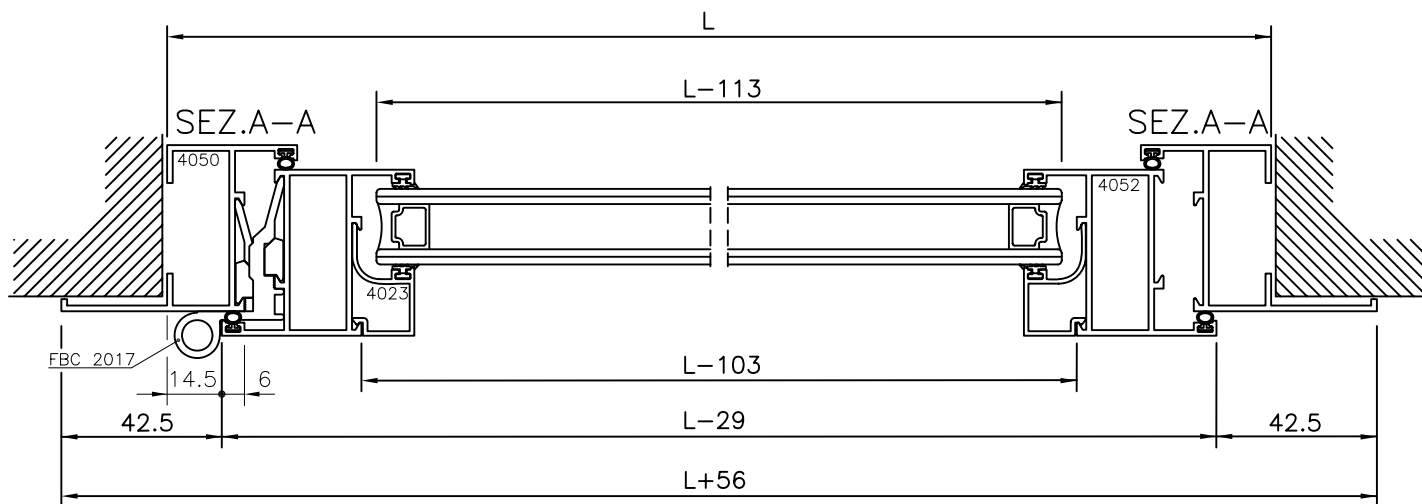
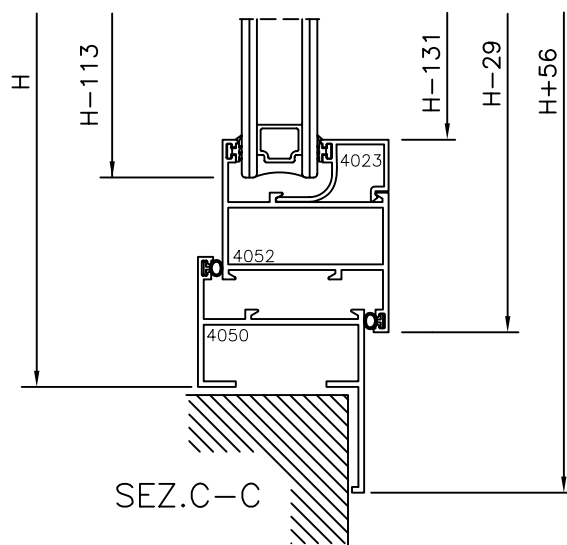
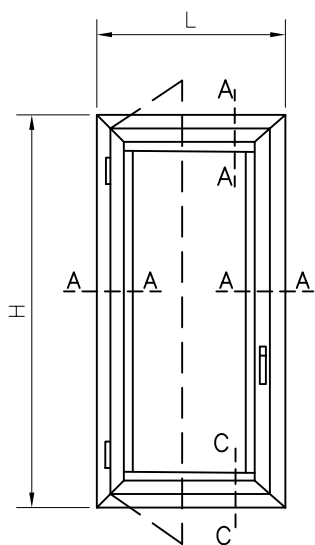
ARTICOLO	DENOMINAZIONE
OCI 44150 + OCI 06287-92	SERRATURA CISA + CONTROPIASTRA
OCI 44460 + OCI 6277-95	SERRATURA CISA + CONTROPIASTRA
OCI 44350 + OCI 6282-95	SERRATURA CISA + CONTROPIASTRA
OCI 44220 + OCI 06277-94	SERRATURA CISA + CONTROPIASTRA
OCI 57357 + OCI 06465-04/06141-39	SERRATURA CISA + CONTROPIASTRA

INDICE DELLE TIPOLOGIE DI INFISSO

TAV. 1	FINESTRA 1 ANTA
TAV. 2	FINESTRA 2 ANTE
TAV. 3	FINESTRA 3 ANTE
TAV. 4	PORTA FINESTRA 1 ANTA
TAV. 5	PORTA FINESTRA 2 ANTE
TAV. 6	FINESTRA 2 ANTE APERTURA ESTERNA
TAV. 7	WASISTAS
TAV. 8	BILICO
TAV. 9	PORTA INTERNA 1 ANTA
TAV. 10	PORTA INTERNA 2 ANTE

TAV. 1

FINESTRA 1 ANTA



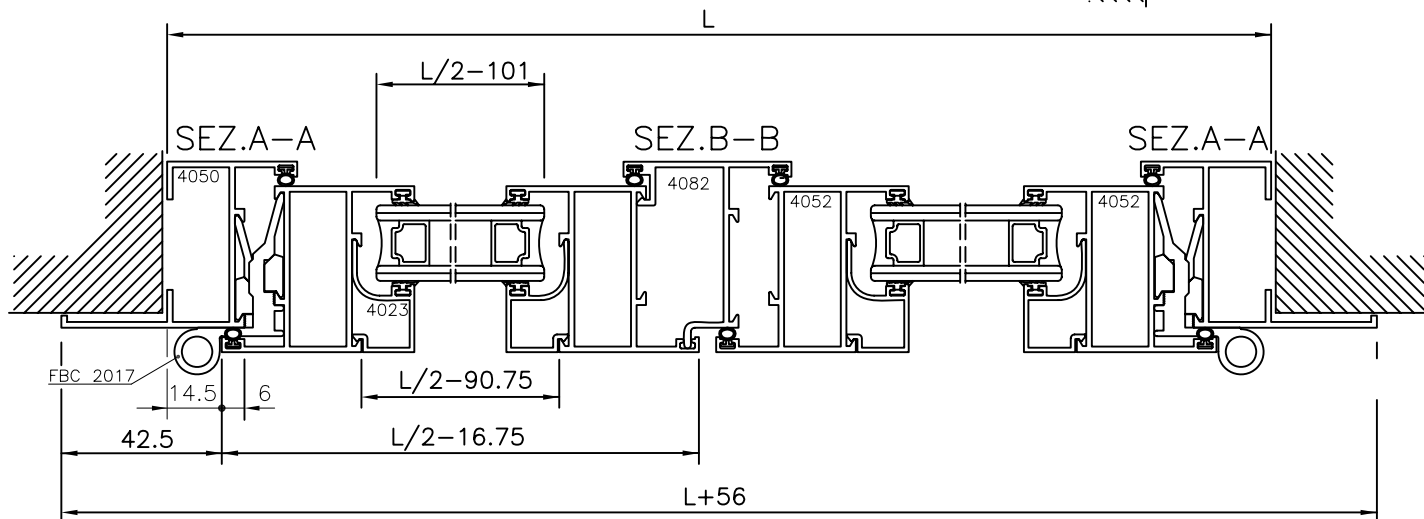
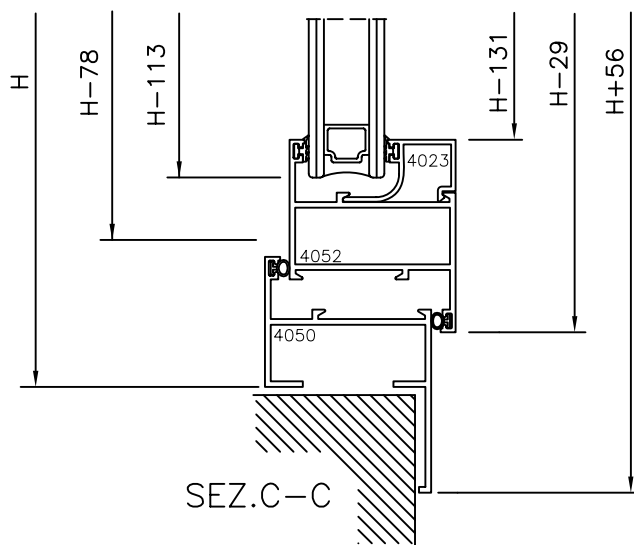
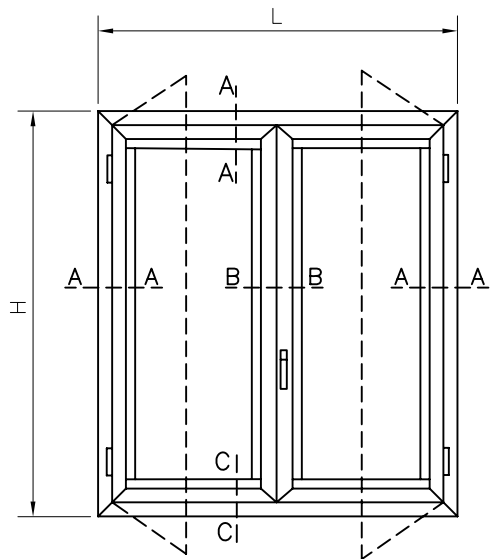
DISTINTA VETRI

VETRI	NR. PEZZI	L	H
(4+12+4)=20	1	L-113	H-113

TABELLA DI TAGLIO

CODICE	SAGOMA	NR. PEZZI	MISURA TAGLIO	DESCRIZIONE	SAGOMA TAGLIO
4050		2	L+56	TRAVERSO TELAIO	
4050		2	H+56	MONTANTE TELAIO	
4052		2	L-29	TRAVERSO ANTA	
4052		2	H-29	MONTANTE ANTA	
4023		2	L-103	TRAVERSO FERMAVETRO	
4023		2	H-131	MONTANTE FERMAVETRO	

N.B. TUTTE LE TABELLE ESPOSTE SUI NOSTRI CATALOGHI SONO OTTENUTE MEDIANTE CALCOLI PURAMENTE TEORICI



DISTINTA VETRI

VETRI	NR. PEZZI	L	H
(4+12+4)=20	2	L/2-101	H-113

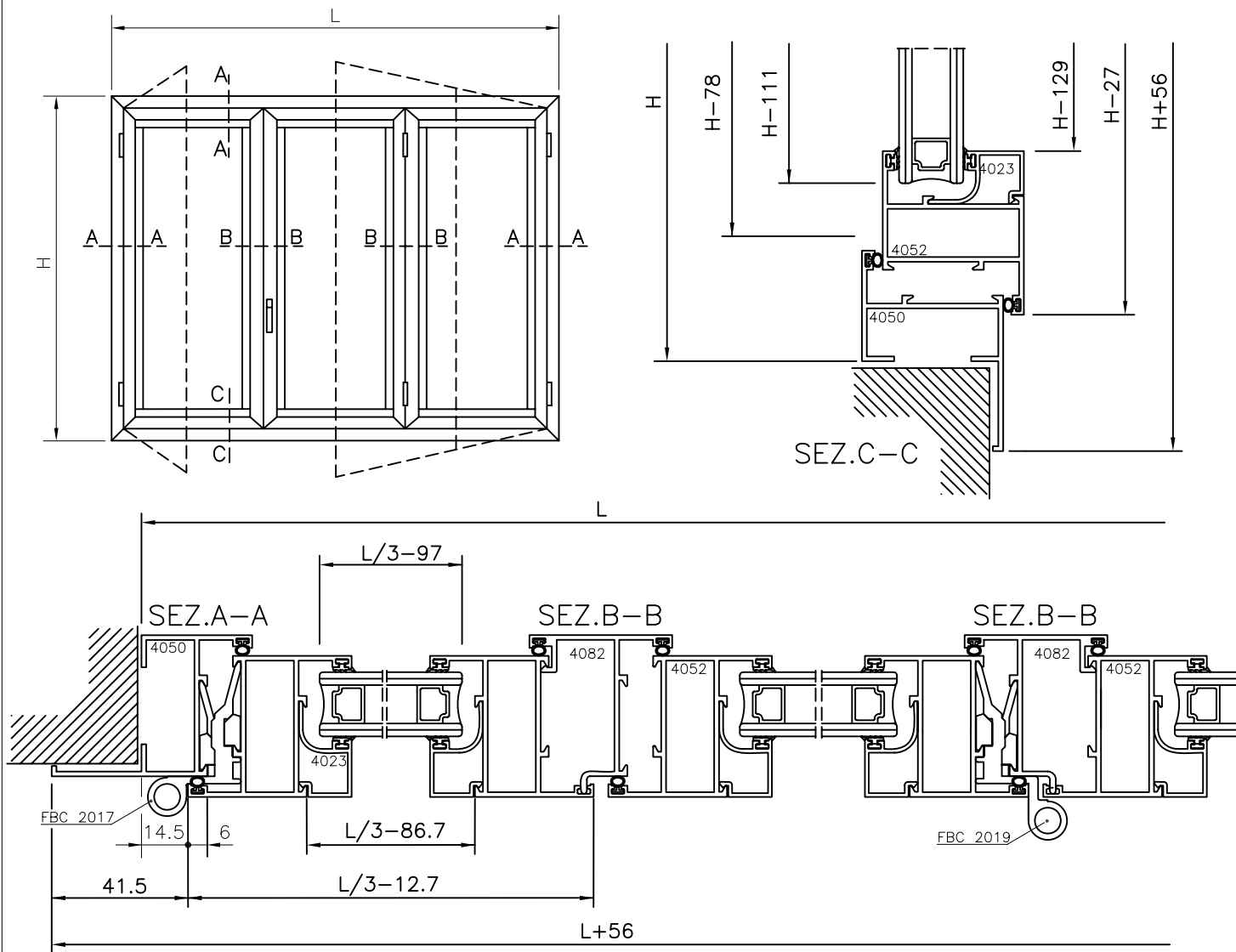
TABELLA DI TAGLIO

CODICE	SAGOMA	NR. PEZZI	MISURA TAGLIO	DESCRIZIONE	SAGOMA TAGLIO
4050		2	L+56	TRAVERSO TELAIO	
4050		2	H+56	MONTANTE TELAIO	
4052		4	L/2-16.75	TRAVERSO ANTA	
4052		4	H-29	MONTANTE ANTA	
4023		4	L/2-90.75	TRAVERSO FERMAVETRO	
4023		4	H-131	MONTANTE FERMAVETRO	
4082		1	H-78	RIPORTO CENTRALE	

N.B. TUTTE LE TABELLE ESPOSTE SUI NOSTRI CATALOGHI SONO OTTENUTE MEDIANTE CALCOLI PURAMENTE TEORICI

TAV. 3

FINESTRA 3 ANTE



DISTINTA VETRI

VETRI	NR. PEZZI	L	H
(4+12+4)=20	3	L/3-97	H-111

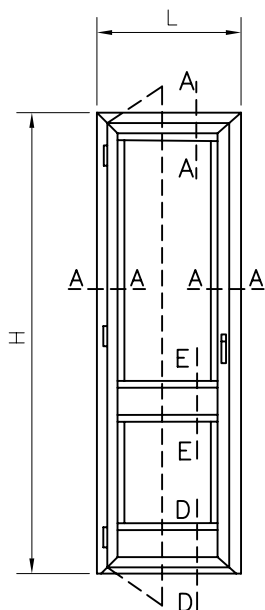
TABELLA DI TAGLIO

CODICE	SAGOMA	NR. PEZZI	MISURA TAGLIO	DESCRIZIONE	SAGOMA TAGLIO
4050		2	L+56	TRAVERSO TELAIO	
4050		2	H+56	MONTANTE TELAIO	
4052		6	L/3-12.7	TRAVERSO ANTA	
4052		6	H-27	MONTANTE ANTA	
4023		6	L/3-86.7	TRAVERSO FERMAVETRO	
4023		6	H-129	MONTANTE FERMAVETRO	
4082		2	H-78	RIPORTO CENTRALE	

N.B. TUTTE LE TABELLE ESPOSTE SUI NOSTRI CATALOGHI SONO OTTENUTE MEDIANTE CALCOLI PURAMENTE TEORICI

TAV. 4

PORTA FINESTRA 1 ANTA



DISTINTA VETRI

VETRI	NR. PEZZI	L	H
(4+12+4)=20	1	L-127	H1-208
(4+12+4)=20	1	L-127	H2-124

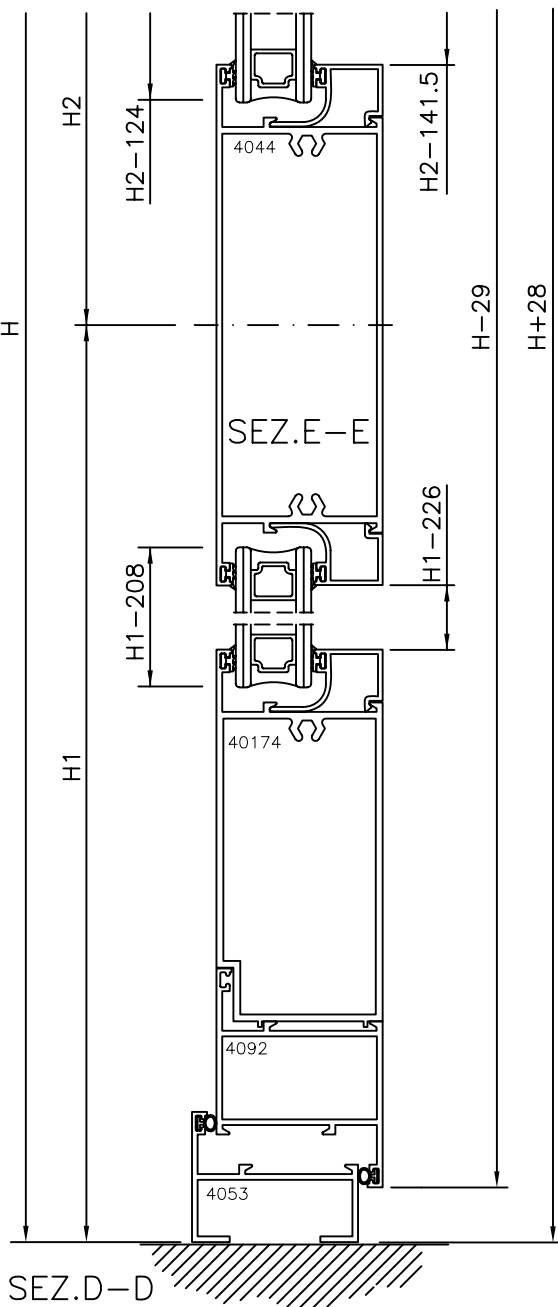
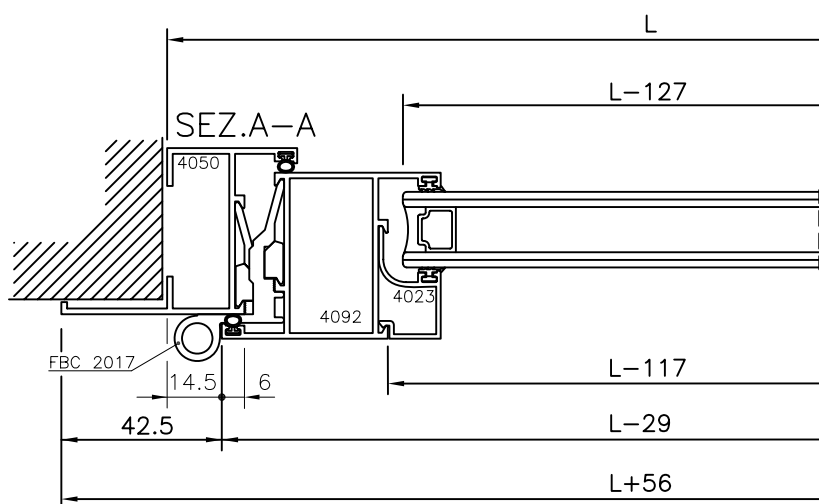


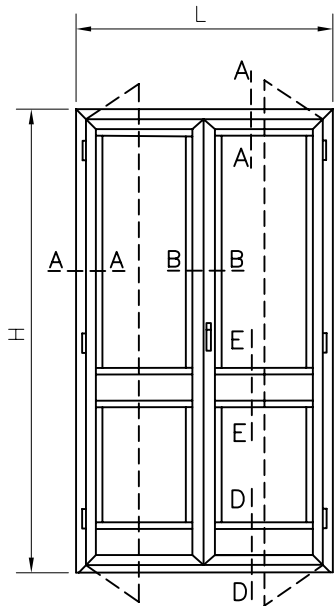
TABELLA DI TAGLIO

CODICE	SAGOMA	NR. PEZZI	MISURA TAGLIO	DESCRIZIONE	SAGOMA TAGLIO
4050		1	L+56	TRAVERSO SUP TELAIO	
4050		2	H+56	MONTANTE TELAIO	
4053		1	L	TRAVERSO INF TELAIO	
4092		2	L-29	TRAVERSO ANTA	
4092		2	H-29	MONTANTE ANTA	
4023		4	L-117	TRAVERSO FERMAVETRO	
4023		(2)+(2)	(H1-226)+(H2-141.5)	MONTANTE FERMAVETRO	
40174		1	L-117	ZOCCOLO DI RIPORTO	
4044		1	L-117	FASCIA	

N.B. TUTTE LE TABELLE ESPOSTE SUI NOSTRI CATALOGHI SONO OTTENUTE MEDIANTE CALCOLI PURAMENTE TEORICI

TAV. 5

PORTA FINESTRA 2 ANTE



DISTINTA VETRI

VETRI	NR. PEZZI	L	H
(4+12+4)=20	2	L/2-115	H1-208
(4+12+4)=20	2	L/2-115	H2-124

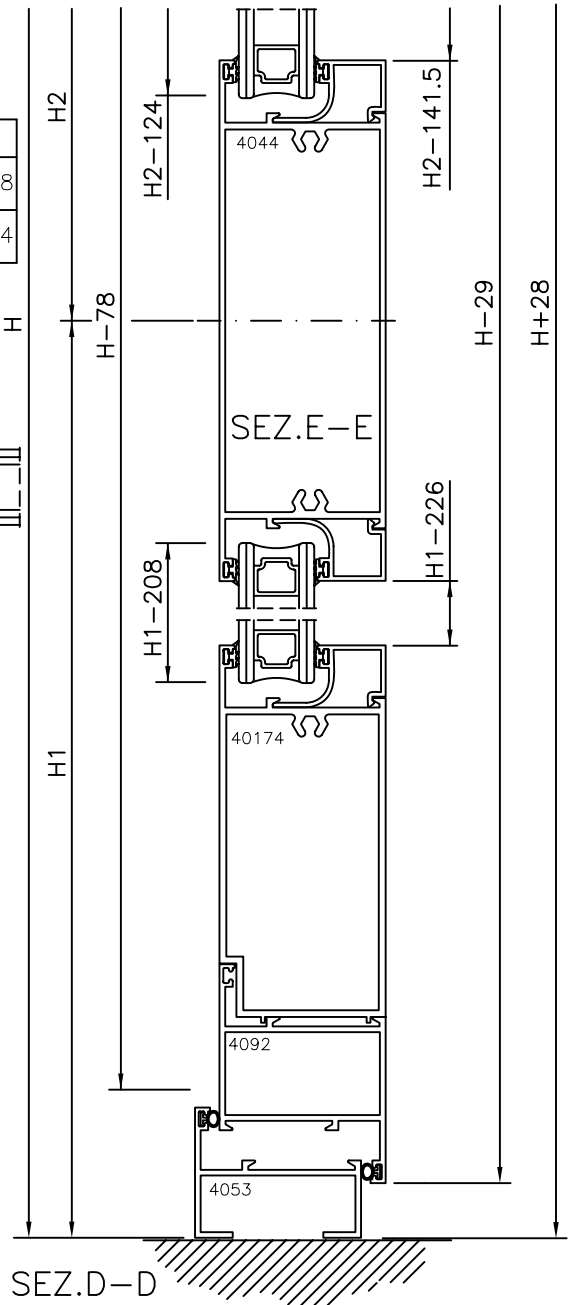
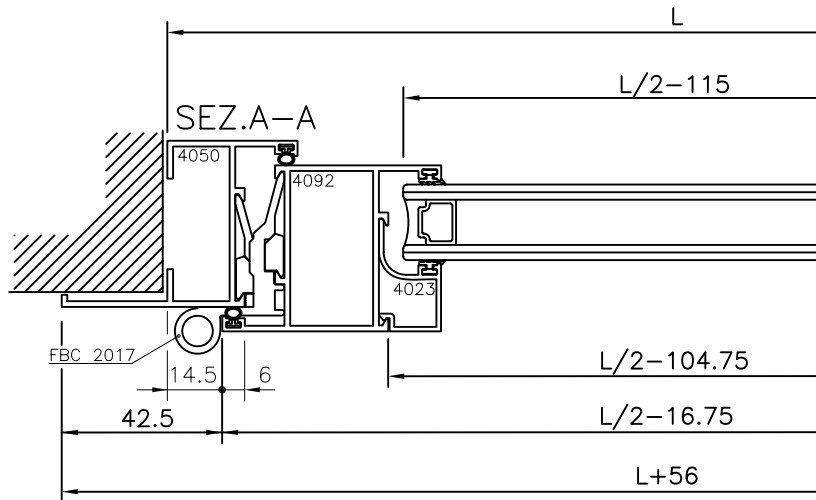
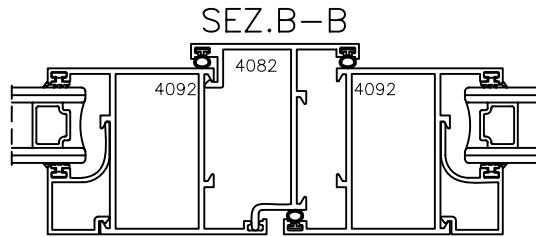


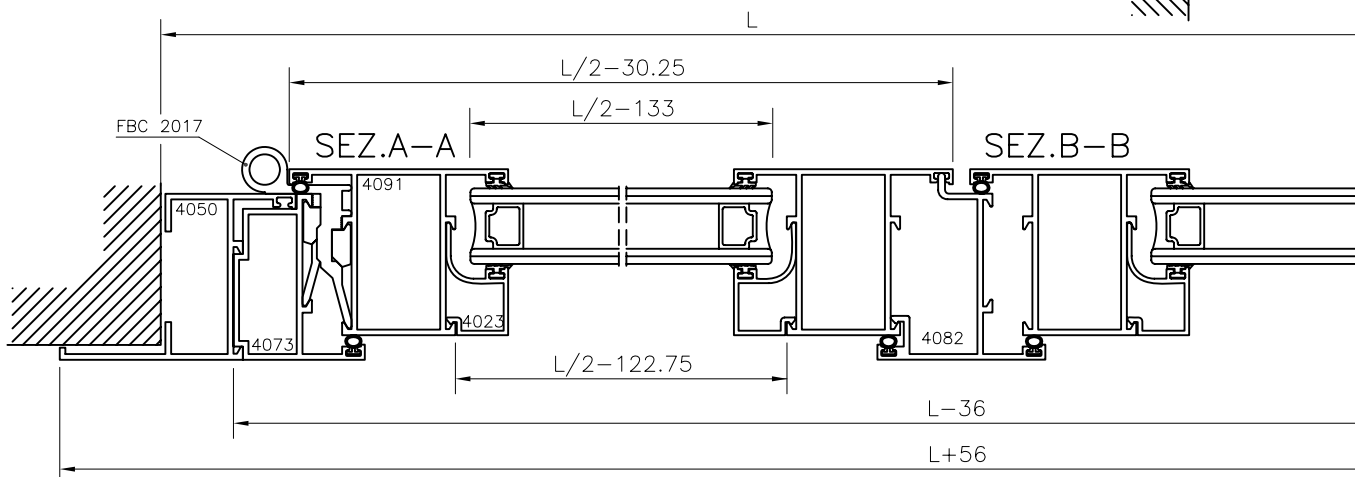
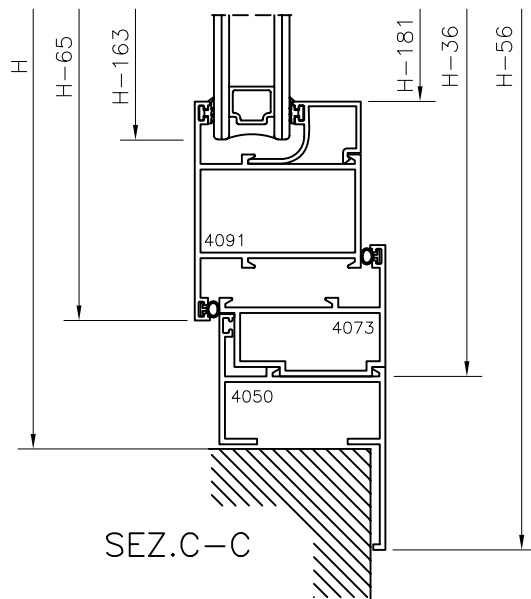
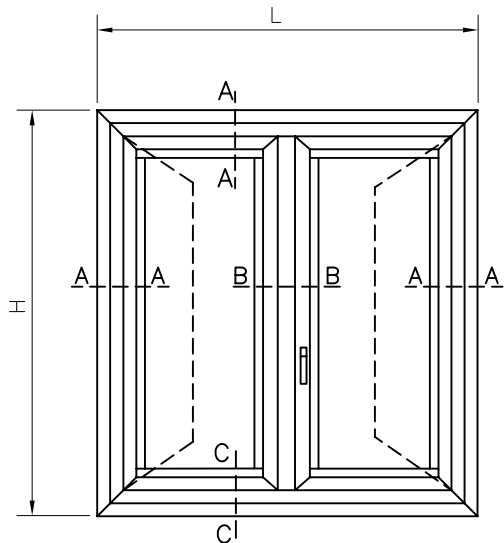
TABELLA DI TAGLIO

CODICE	SAGOMA	NR. PEZZI	MISURA TAGLIO	DESCRIZIONE	SAGOMA TAGLIO
4050		1	L+56	TRAVERSO SUP TELAIO	
4050		2	H+56	MONTANTE TELAIO	
4053		1	L	TRAVERSO INF TELAIO	
4092		4	L/2-16.75	TRAVERSO ANTA	
4092		4	H-29	MONTANTE ANTA	
4023		8	L/2-104.75	TRAVERSO FERMAVETRO	
4023		(4)+(4)	(H1-226)+(H2-141.5)	MONTANTE FERMAVETRO	
40174		2	L/2-104.75	ZOCCOLO DI RIPORTO	
4044		2	L/2-104.75	FASCIA	
4082		1	H-78	RIPORTO CENTRALE	

N.B. TUTTE LE TABELLE ESPOSTE SUI NOSTRI CATALOGHI SONO
L.O.T.TENUTE MEDIANTE CALCOLI PURAMENTE TEORICI

TAV. 6

FINESTRA 2 ANTE APERTURA ESTERNA



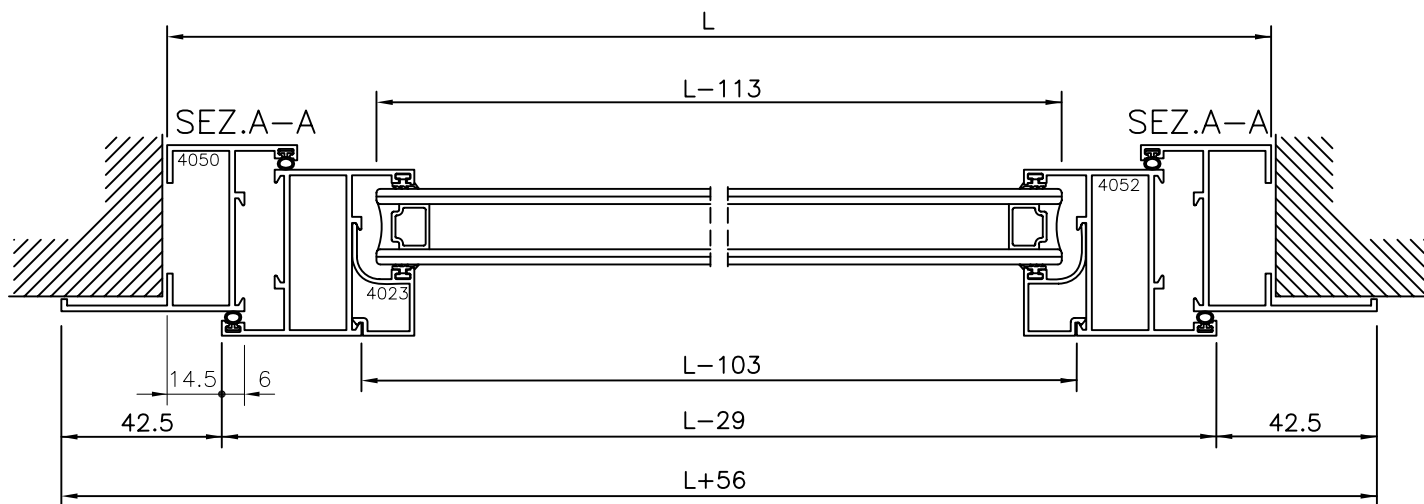
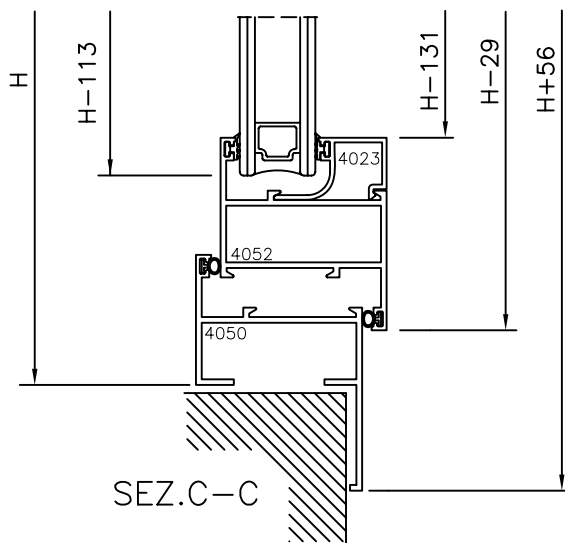
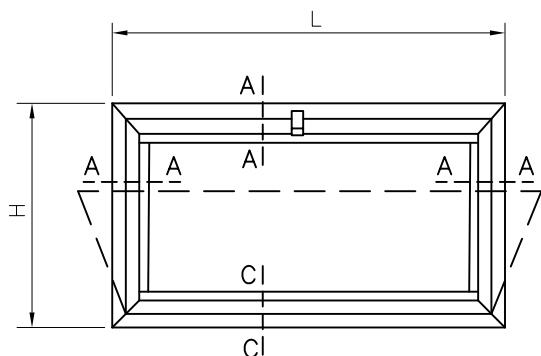
DISTINTA VETRI

VETRI	NR. PEZZI	L	H
(4+12+4)=20	2	L/2-133	H-163

TABELLA DI TAGLIO

CODICE	SAGOMA	NR. PEZZI	MISURA TAGLIO	DESCRIZIONE	SAGOMA TAGLIO
4050		2	L+56	TRAVERSO TELAIO	
4050		2	H+56	MONTANTE TELAIO	
4091		4	L/2-30.25	TRAVERSO ANTA	
4091		4	H-65	MONTANTE ANTA	
4023		4	L/2-122.75	TRAVERSO FERMAVETRO	
4023		4	H-181	MONTANTE FERMAVETRO	
4082		1	H-114	RIPORTO CENTRALE	
4073		2	H-36	TRAVERSO INVERSIONE	
4073		2	H-36	MONTANTE INVERSIONE	

N.B. TUTTE LE TABELLE ESPOSTE SUI NOSTRI CATALOGHI SONO
OTTENUTE MEDIANTE CALCOLI PURAMENTE TEORICI



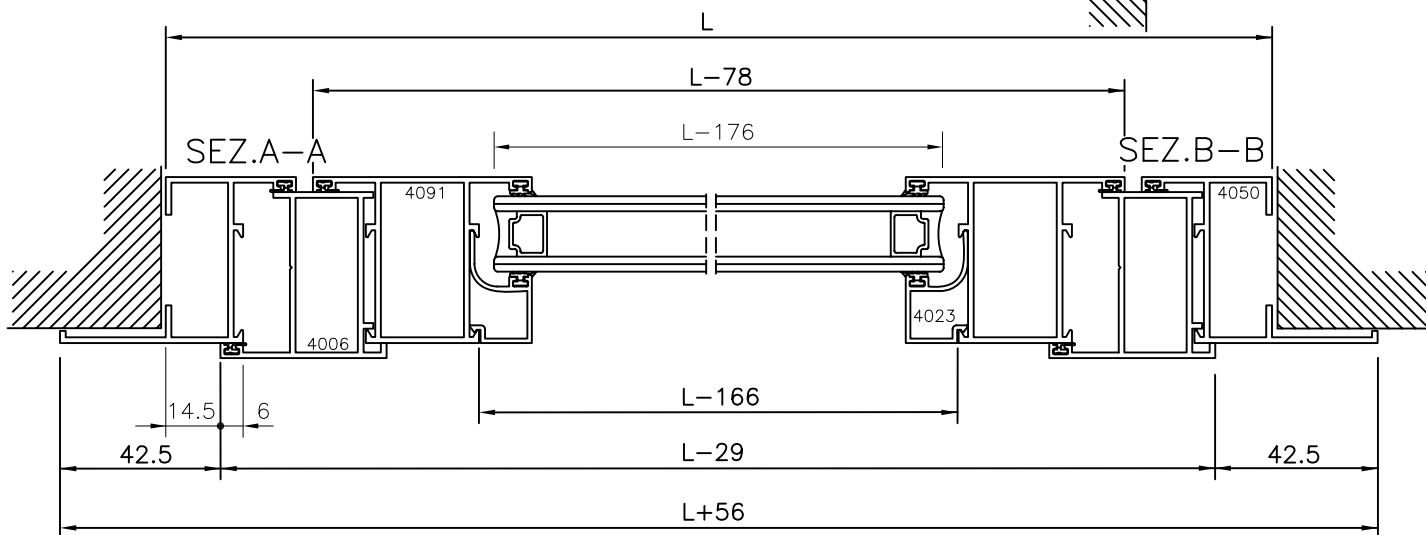
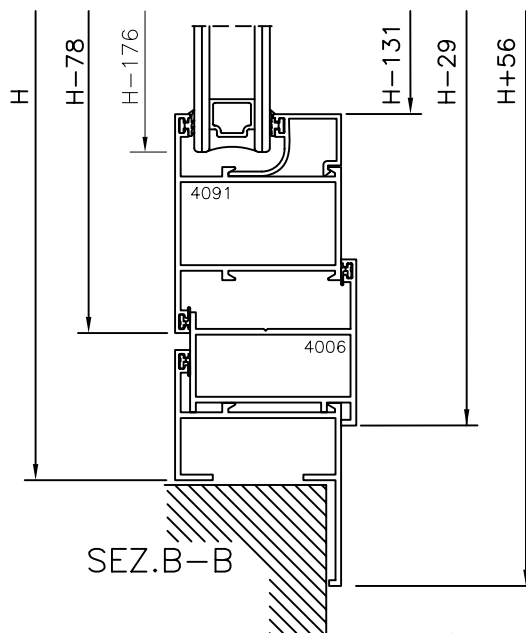
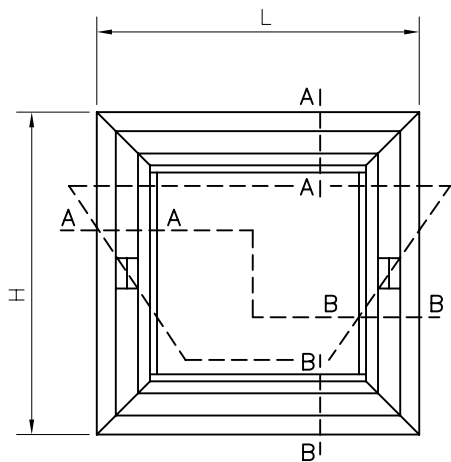
DISTINTA VETRI

VETRI	NR. PEZZI	L	H
(4+12+4)=20	1	L-113	H-113

TABELLA DI TAGLIO

CODICE	SAGOMA	NR. PEZZI	MISURA TAGLIO	DESCRIZIONE	SAGOMA TAGLIO
4050		2	L+56	TRAVERSO TELAIO	
4050		2	H+56	MONTANTE TELAIO	
4052		2	L-29	TRAVERSO ANTA	
4052		2	H-29	MONTANTE ANTA	
4023		2	L-103	TRAVERSO FERMAVETRO	
4023		2	H-131	MONTANTE FERMAVETRO	

N.B. TUTTE LE TABELLE ESPOSTE SUI NOSTRI CATALOGHI SONO OTTENUTE MEDIANTE CALCOLI PURAMENTE TEORICI



DISTINTA VETRI

VETRI	NR. PEZZI	L	H
(4+12+4)=20	1	L-176	H-176

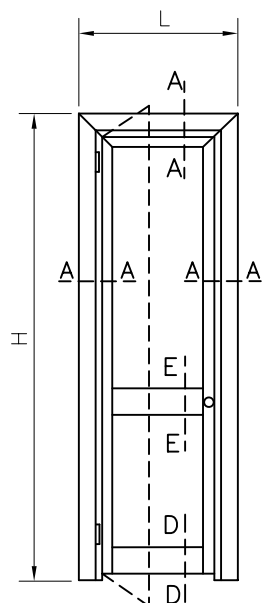
TABELLA DI TAGLIO

CODICE	SAGOMA	NR. PEZZI	MISURA TAGLIO	DESCRIZIONE	SAGOMA TAGLIO
4050		2	L+56	TRAVERSO TELAIO	
4050		2	H+56	MONTANTE TELAIO	
4091		2	L-78	TRAVERSO ANTA	
4091		2	H-78	MONTANTE ANTA	
4023		2	L-166	TRAVERSO FERMAVETRO	
4023		2	H-194	MONTANTE FERMAVETRO	
4006		2	L-29	TRAVERSO INVERSIONE	
4006		2	H-29	MONTANTE INVERSIONE	

N.B. TUTTE LE TABELLE ESPOSTE SUI NOSTRI CATALOGHI SONO OTTENUTE MEDIANTE CALCOLI PURAMENTE TEORICI

TAV. 9

PORTA INTERNA 1 ANTA



DISTINTA PANNELLI

PANNELLI	NR. PEZZI	L	H
< 40 mm	1	L-113	H1-131
< 40 mm	1	L-113	H2-95

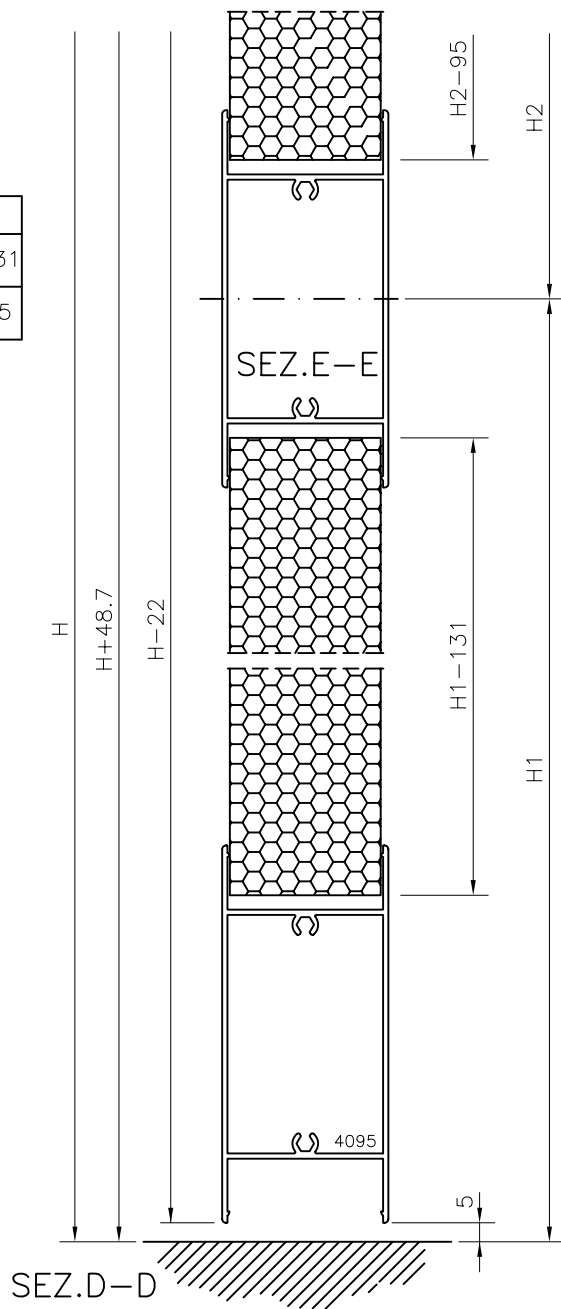
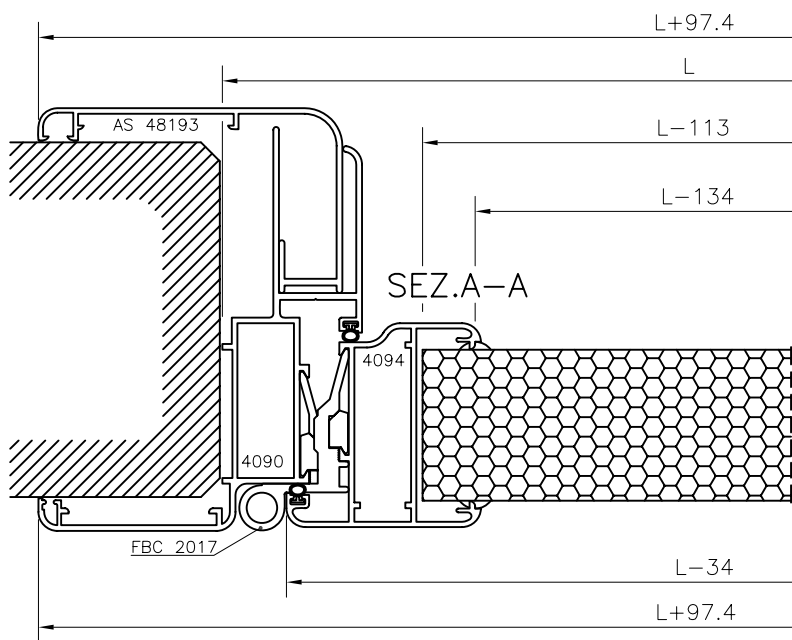


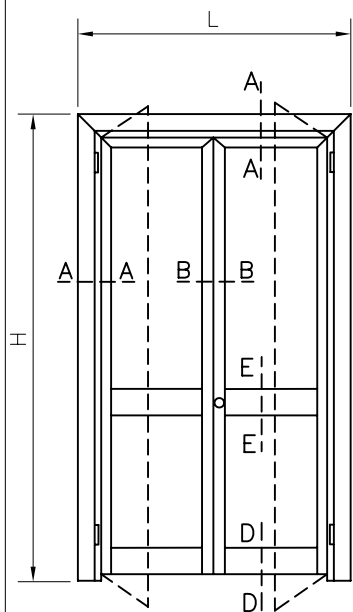
TABELLA DI TAGLIO

CODICE	SAGOMA	NR. PEZZI	MISURA TAGLIO	DESCRIZIONE	SAGOMA TAGLIO
4090		1	L+97.4	TRAVERSO TELAIO	
4090		2	H+48.7	MONTANTE TELAIO	
AS 48193		1	L+97.4	TRAVERSO IMBOTTE	
AS 48193		2	H+48.7	MONTANTE IMBOTTE	
4094		1	L-34	TRAVERSO ANTA	
4094		2	H-22	MONTANTE ANTA	
4095		1	L-134	FASCIA	
4095		1	L-134	ZOCCOLO	

N.B. TUTTE LE TABELLE ESPOSTE SUI NOSTRI CATALOGHI SONO
O.TTENUTE MEDIANTE CALCOLI PURAMENTE TEORICI

TAV. 10

PORTA INTERNA 2 ANTE



DISTINTA PANNELLI

PANNELLI	NR. PEZZI	L	H
< 40 mm	2	L/2-98	H1-131
< 40 mm	2	L/2-98	H2-95

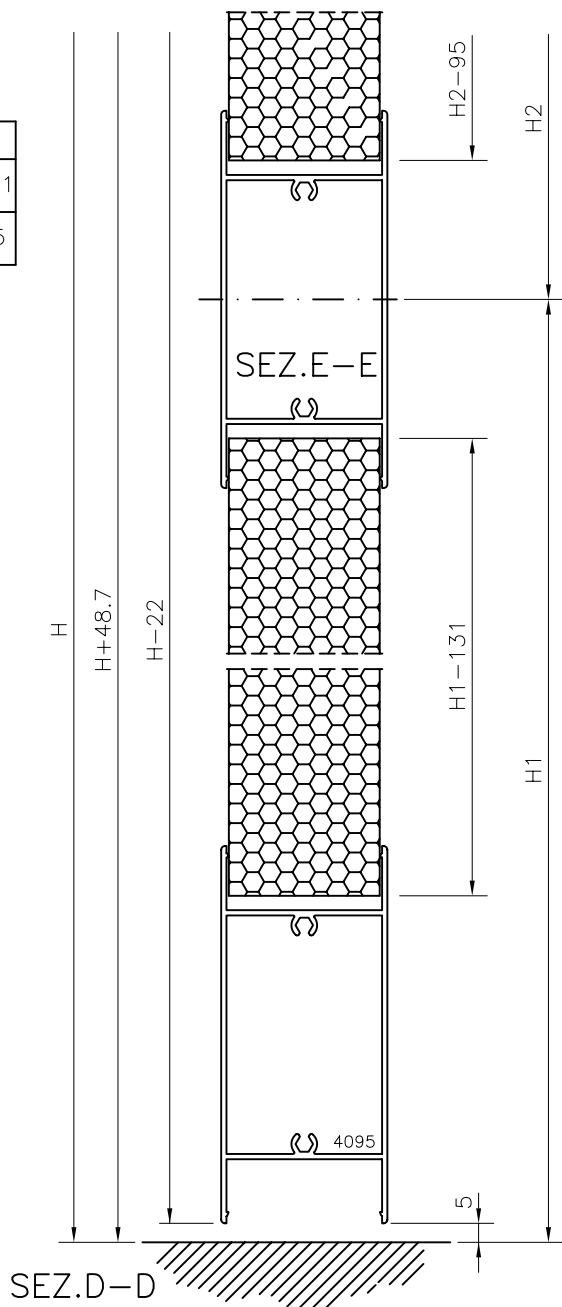
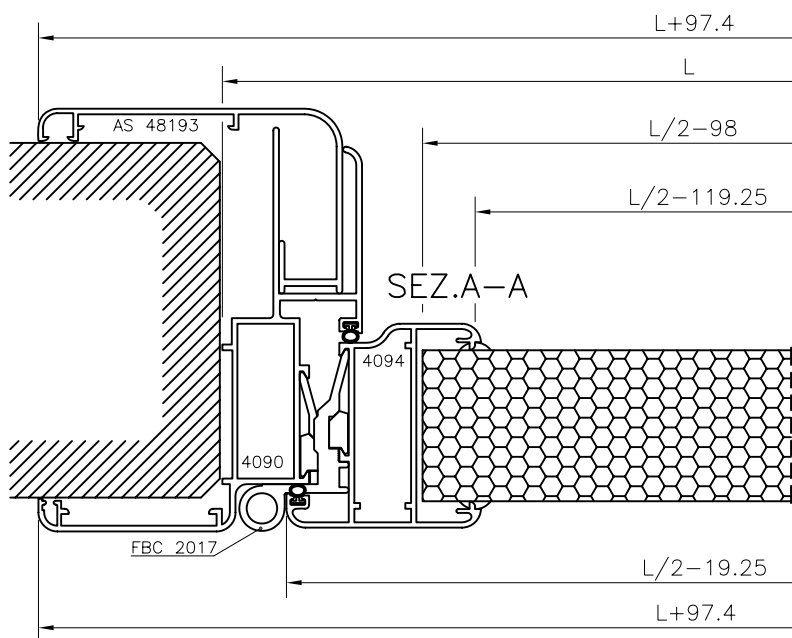
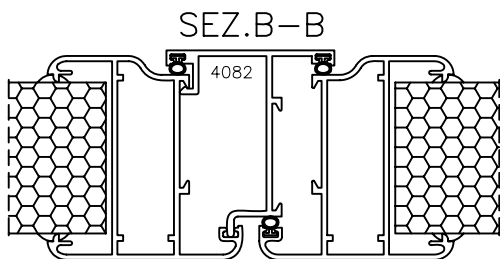
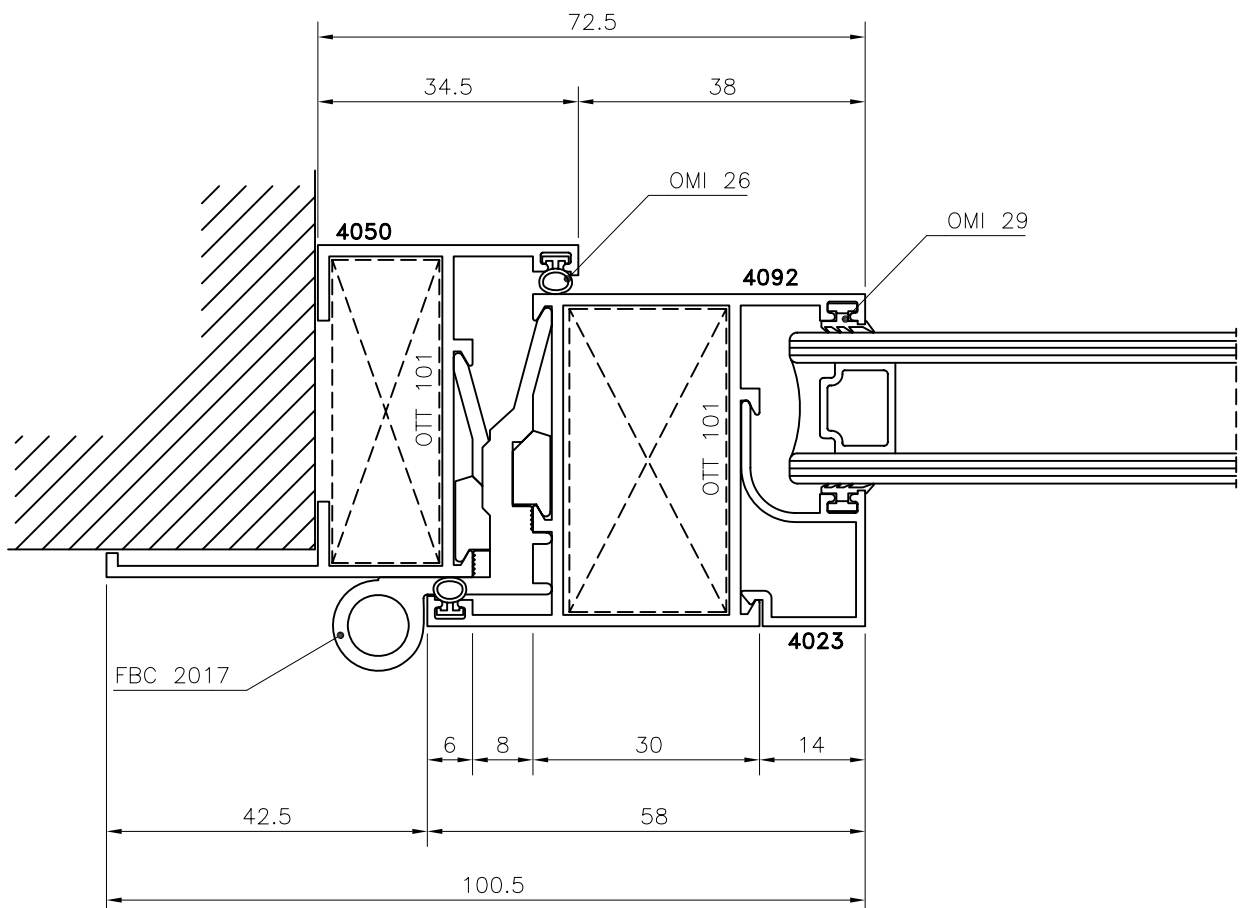
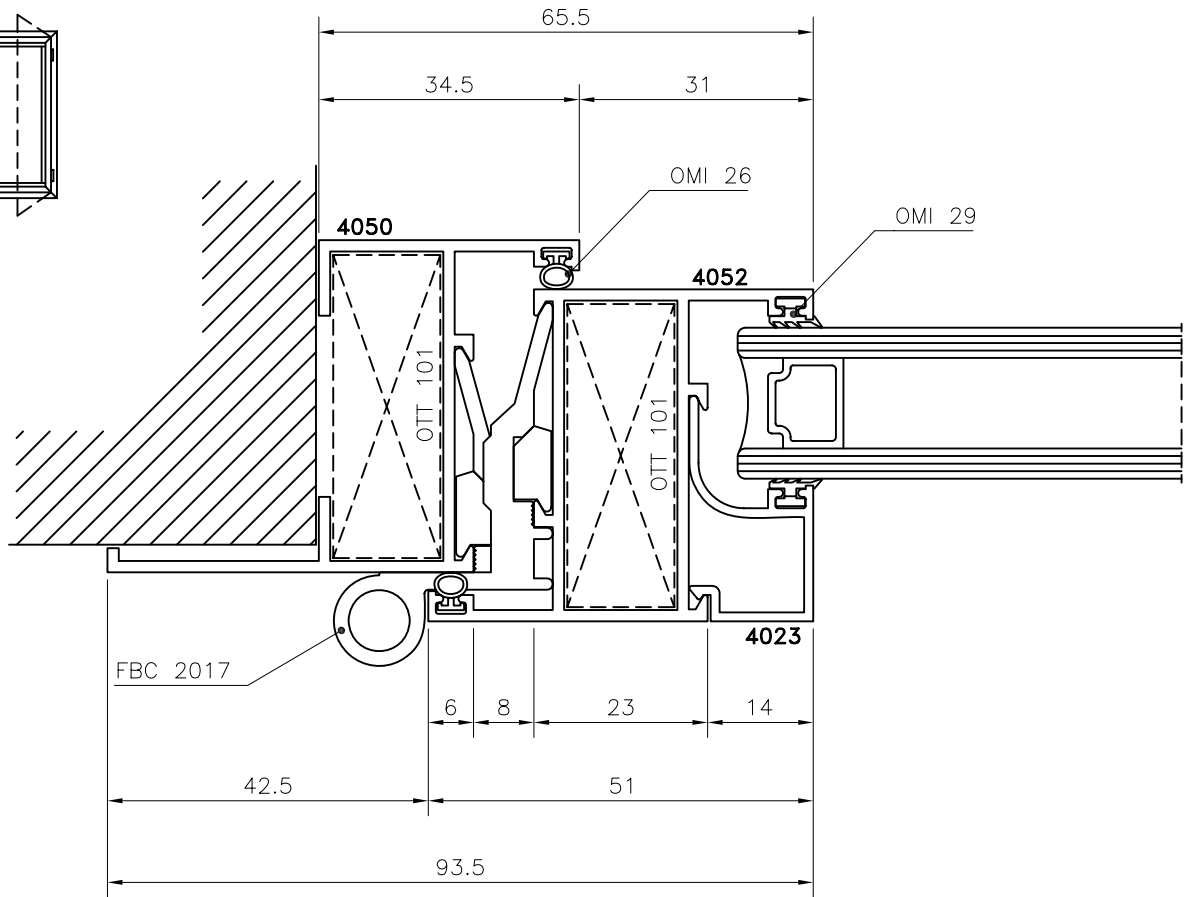
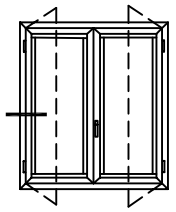


TABELLA DI TAGLIO

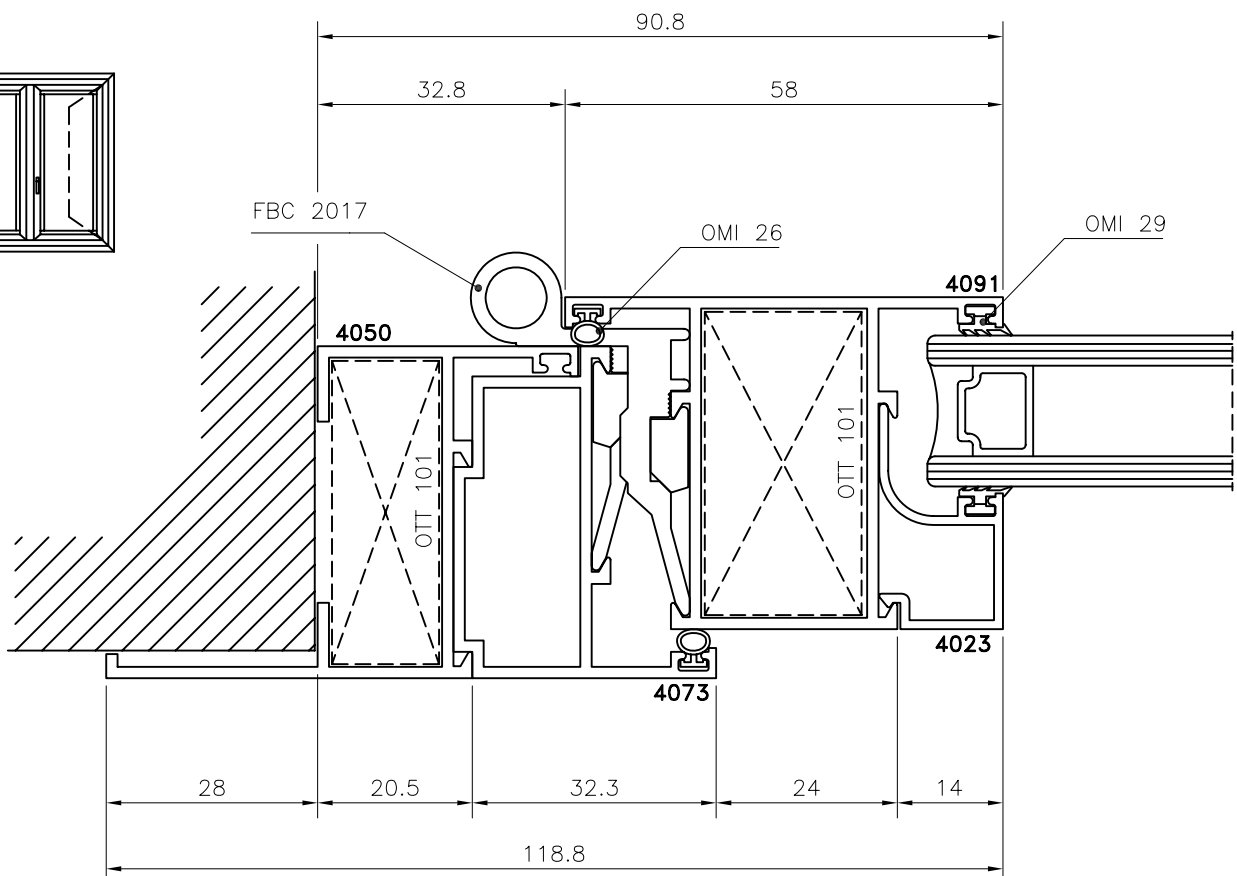
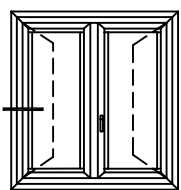
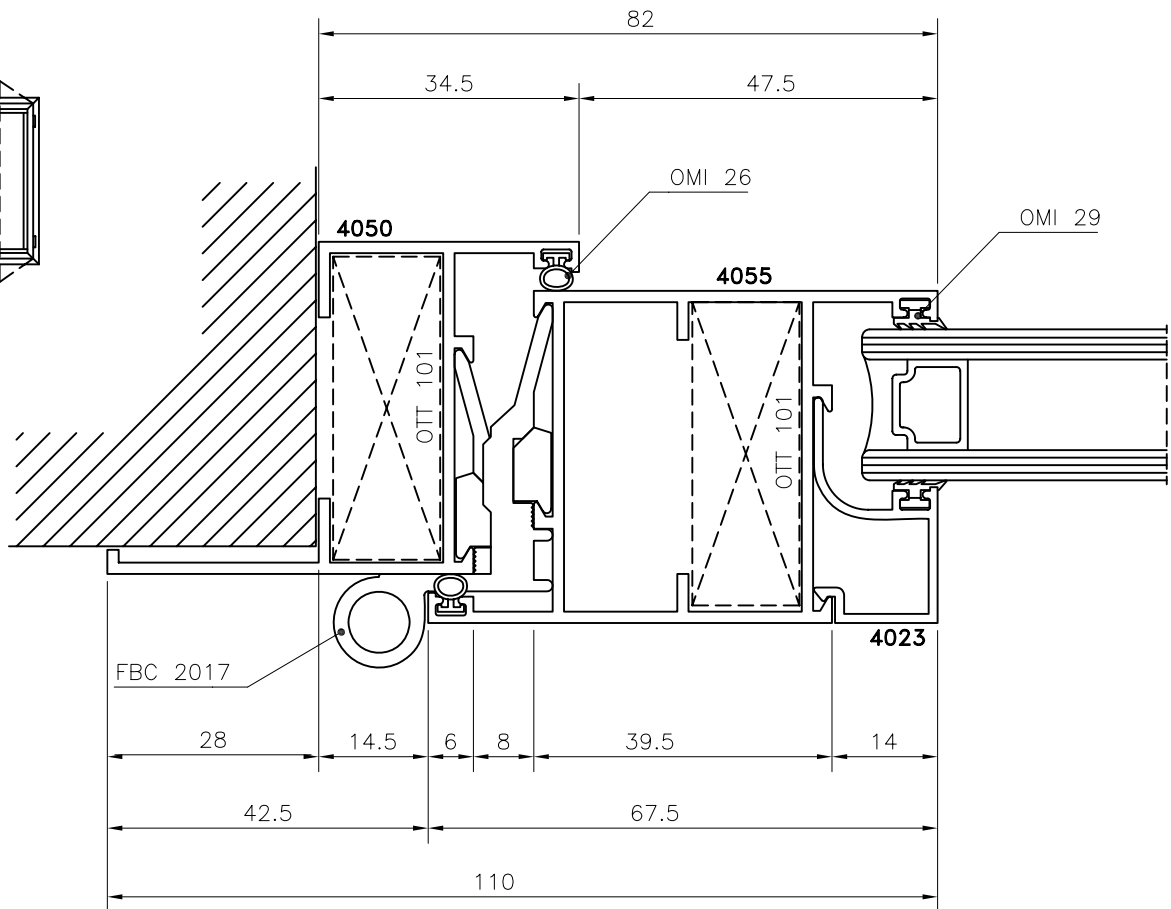
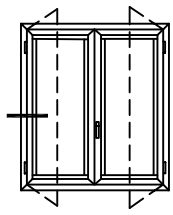
CODICE	SAGOMA	NR. PEZZI	MISURA TAGLIO	DESCRIZIONE	SAGOMA TAGLIO
4090		1	L+97.4	TRAVERSO TELAIO	
4090		2	H+48.7	MONTANTE TELAIO	
AS 48193		1	L+97.4	TRAVERSO IMBOTTE	
AS 48193		2	H+48.7	MONTANTE IMBOTTE	
4094		2	L/2-19.25	TRAVERSO ANTA	
4094		4	H-22	MONTANTE ANTA	
4095		2	L/2-119.25	FASCIA	
4095		2	L/2-119.25	ZOCCOLO	
4082		1	H-46.5	RIPORTO CENTRALE	

N.B. TUTTE LE TABELLE ESPOSTE SUI NOSTRI CATALOGHI SONO
O.T.T.E.N.U.T.E MEDIANTE CALCOLI PURAMENTE TEORICI

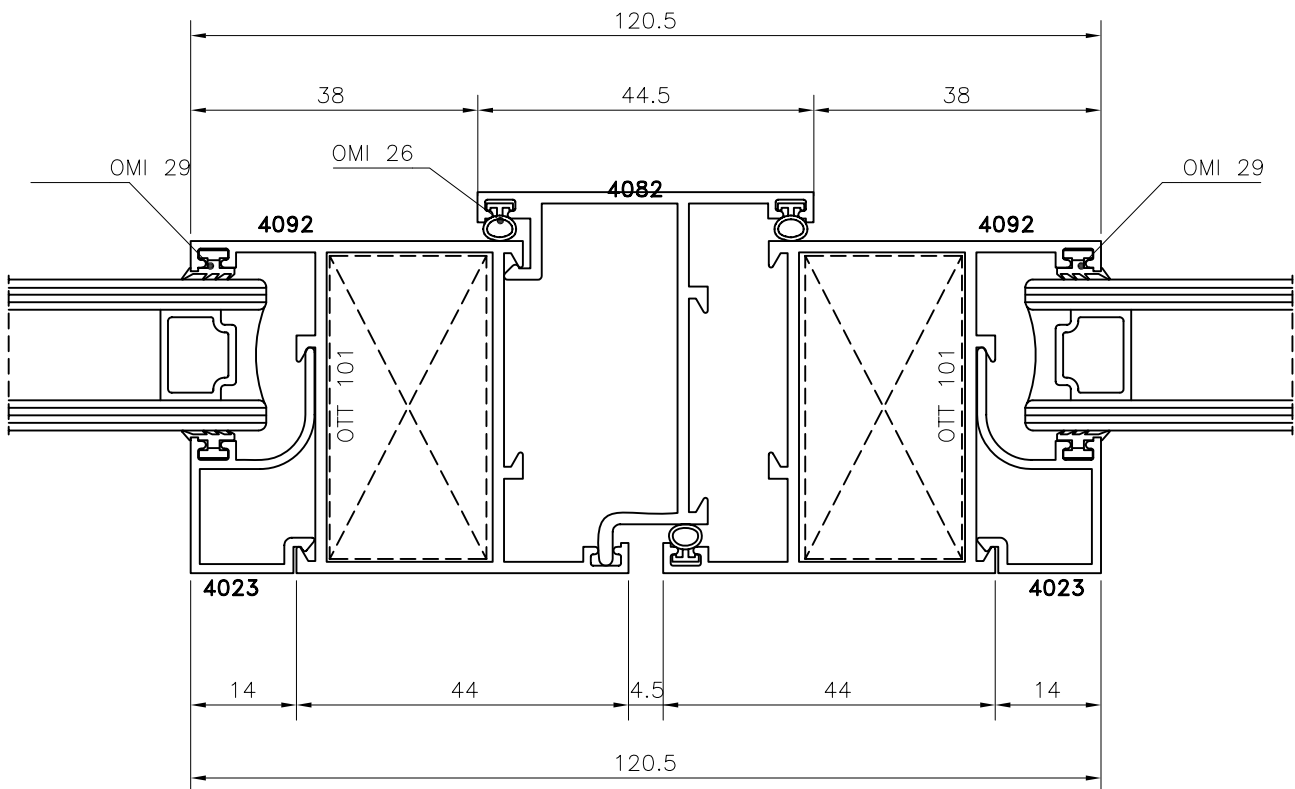
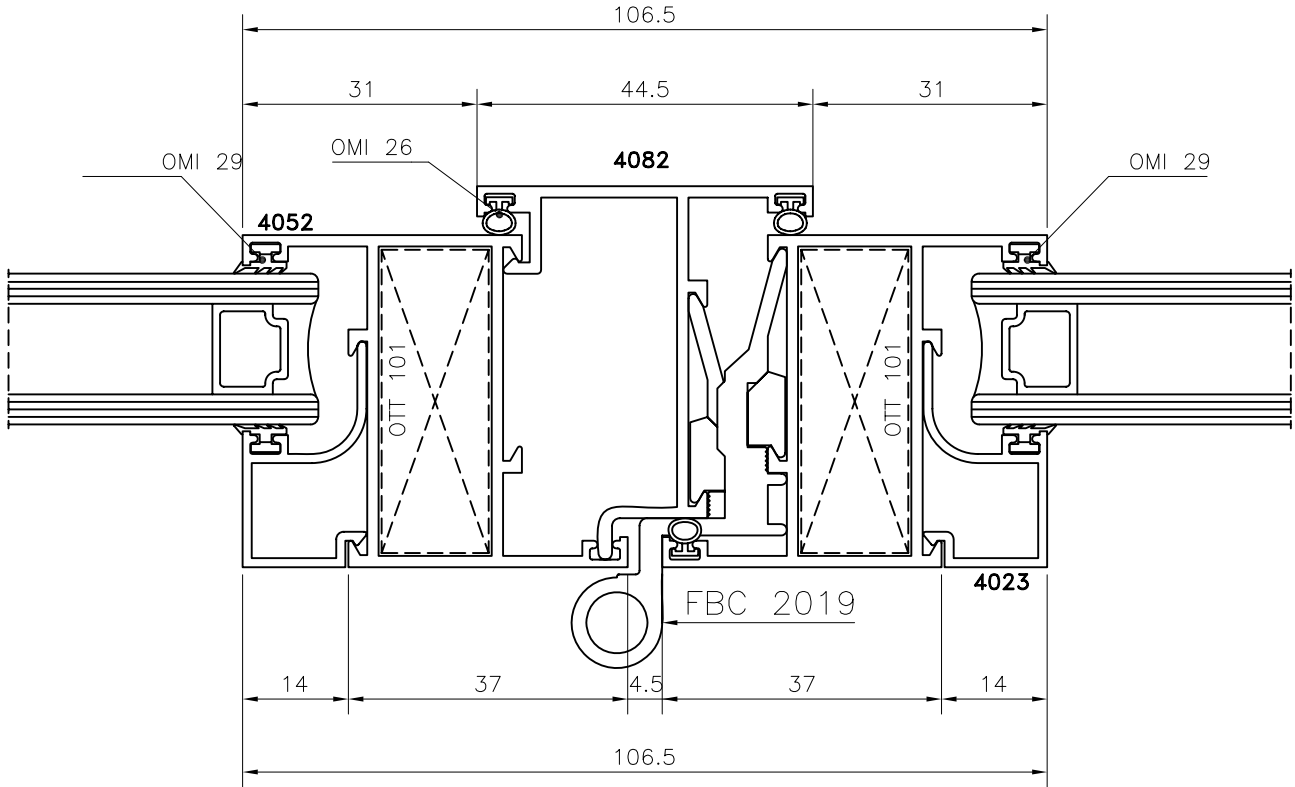
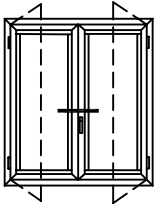
FT45 - Nodi



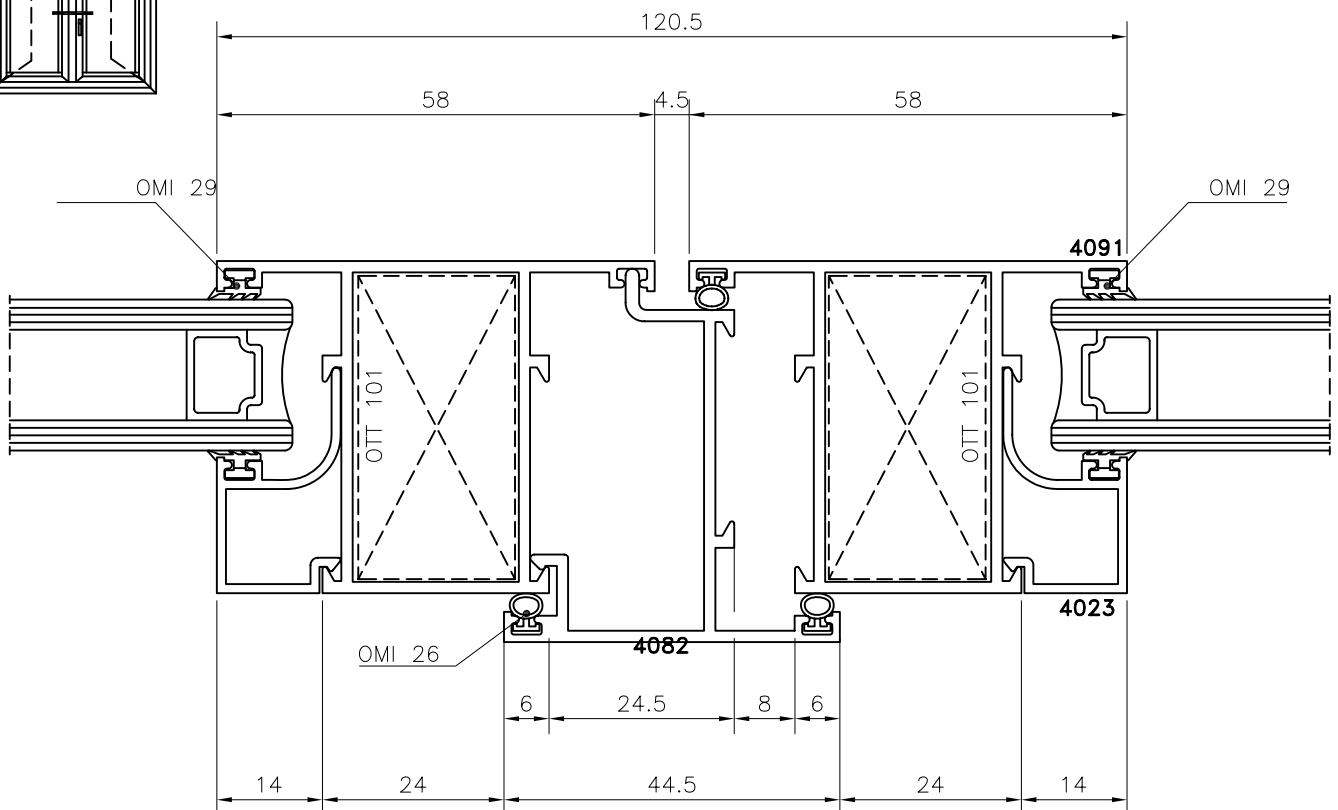
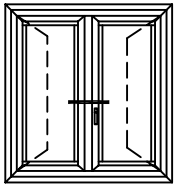
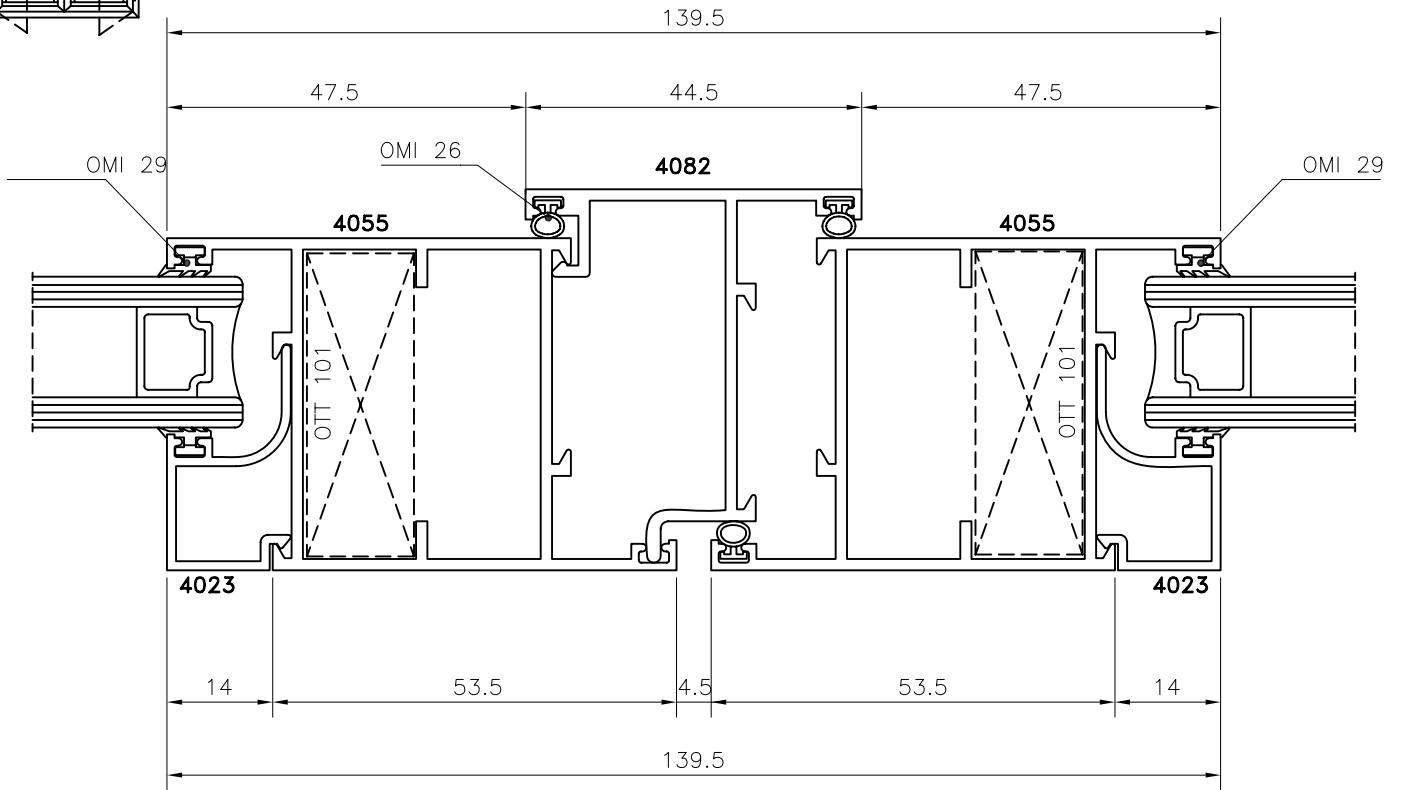
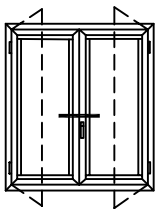
FT45 - Nodi



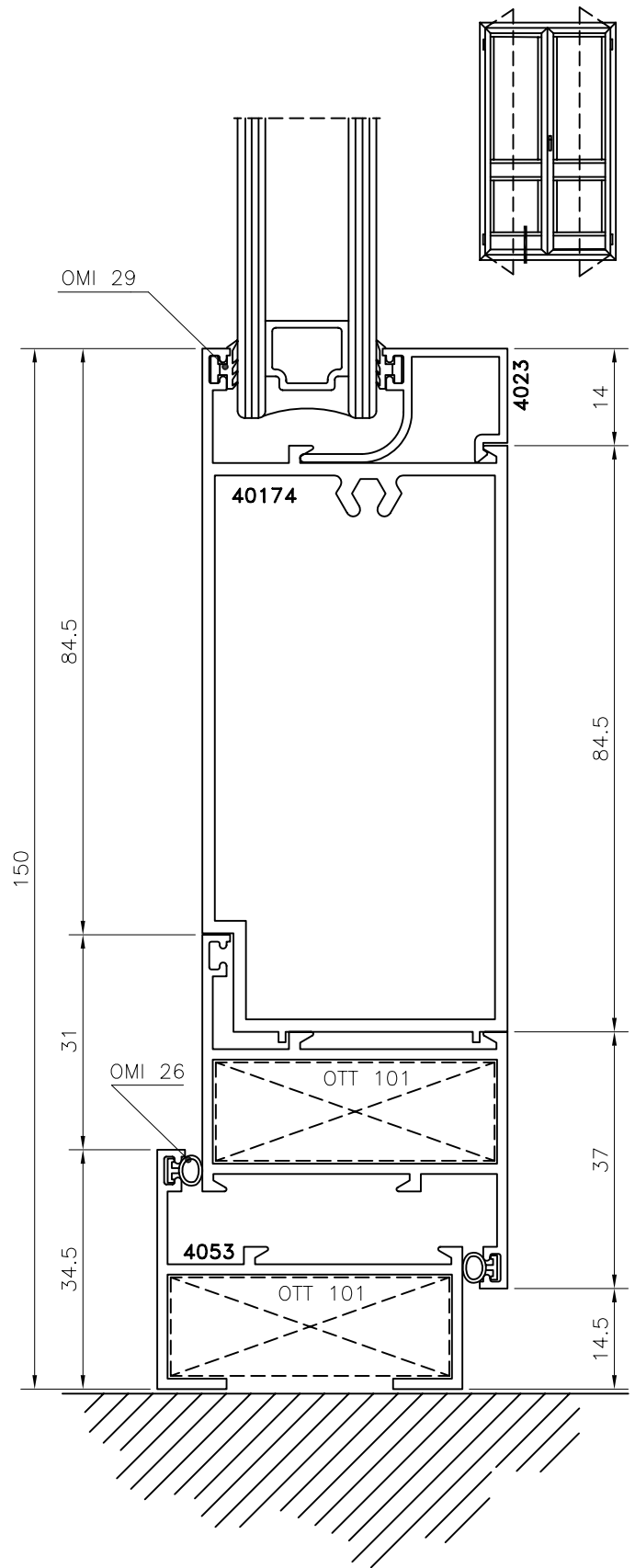
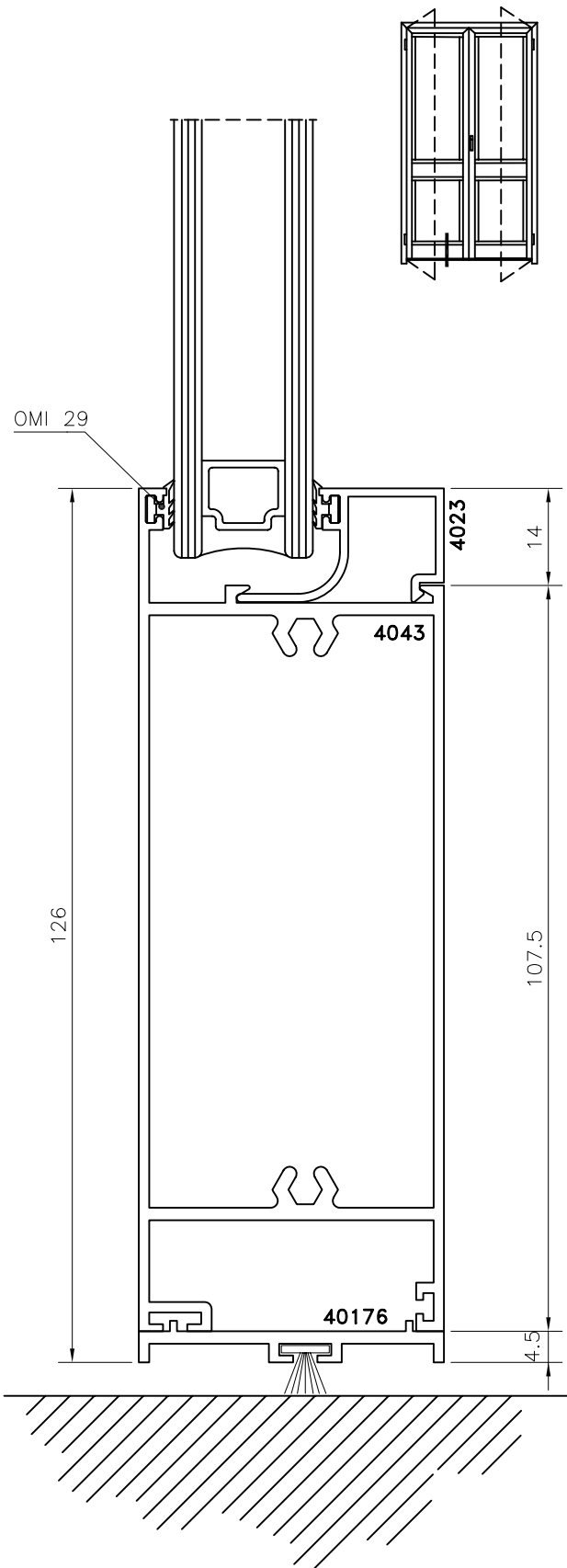
FT45 - Nodi



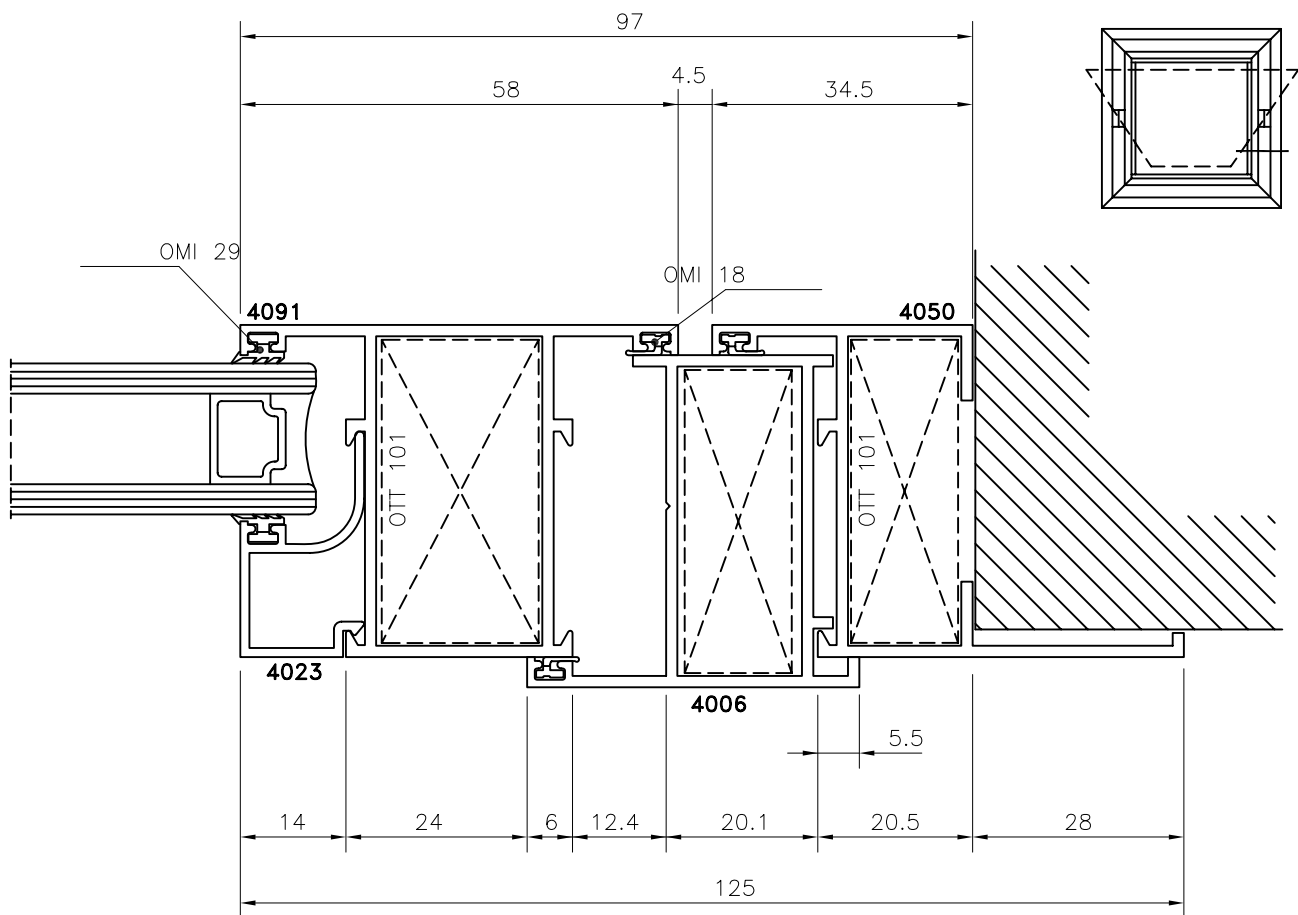
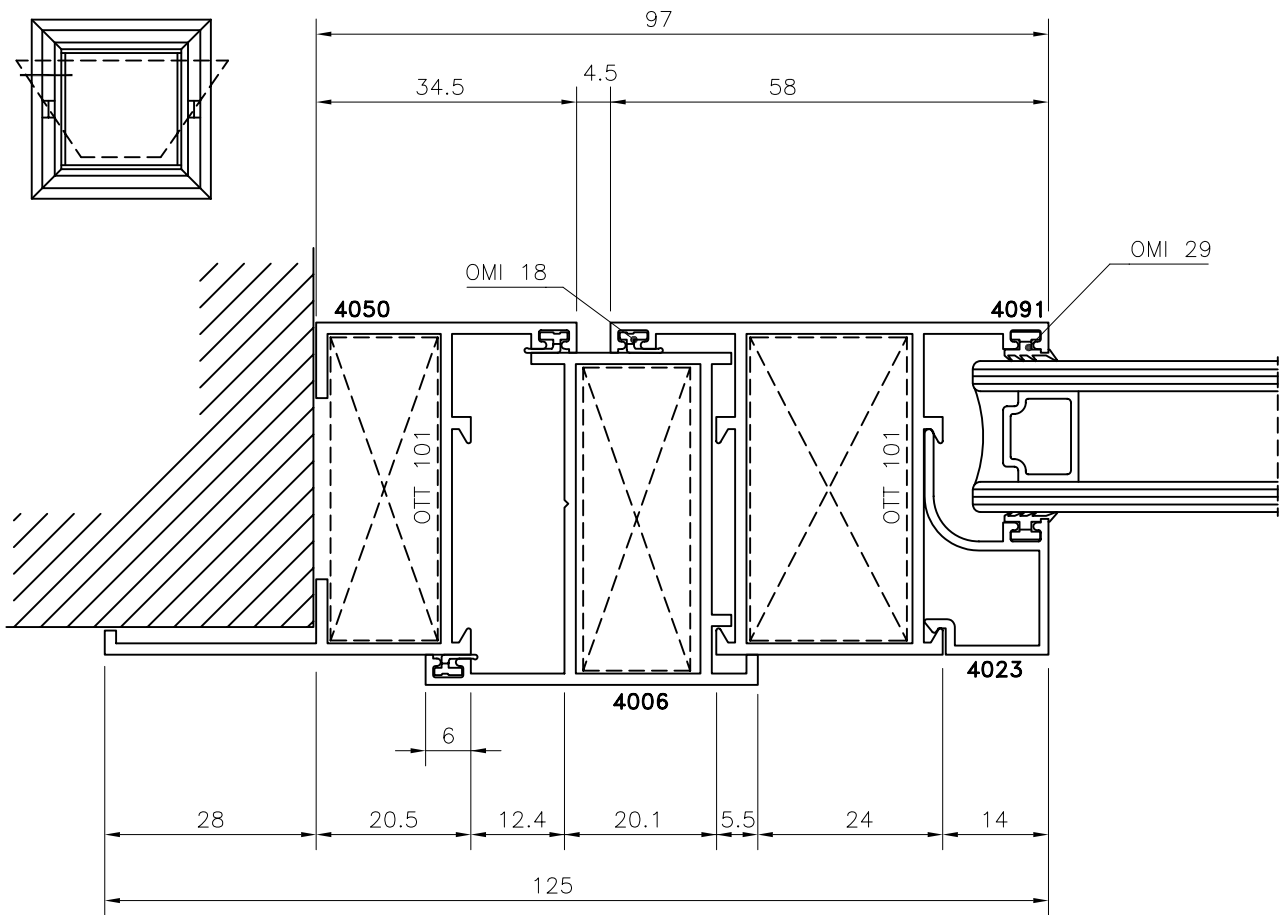
FT45 - Nodi



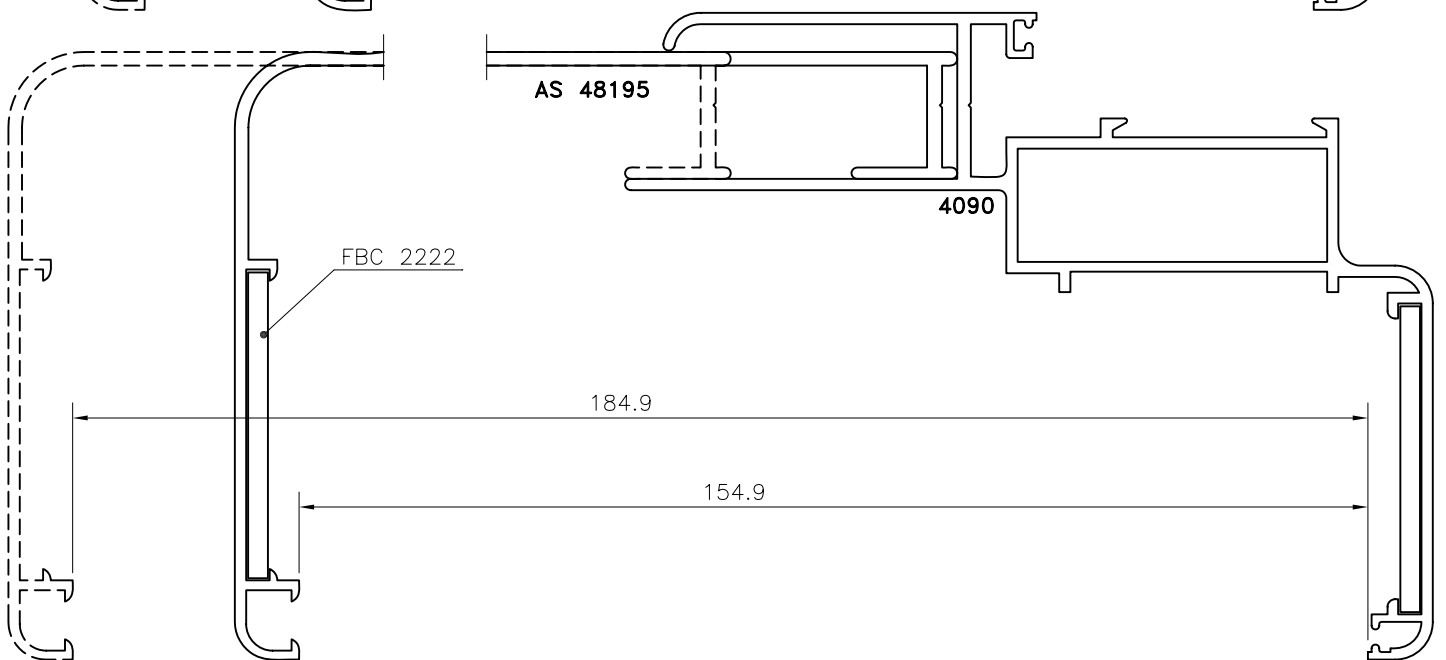
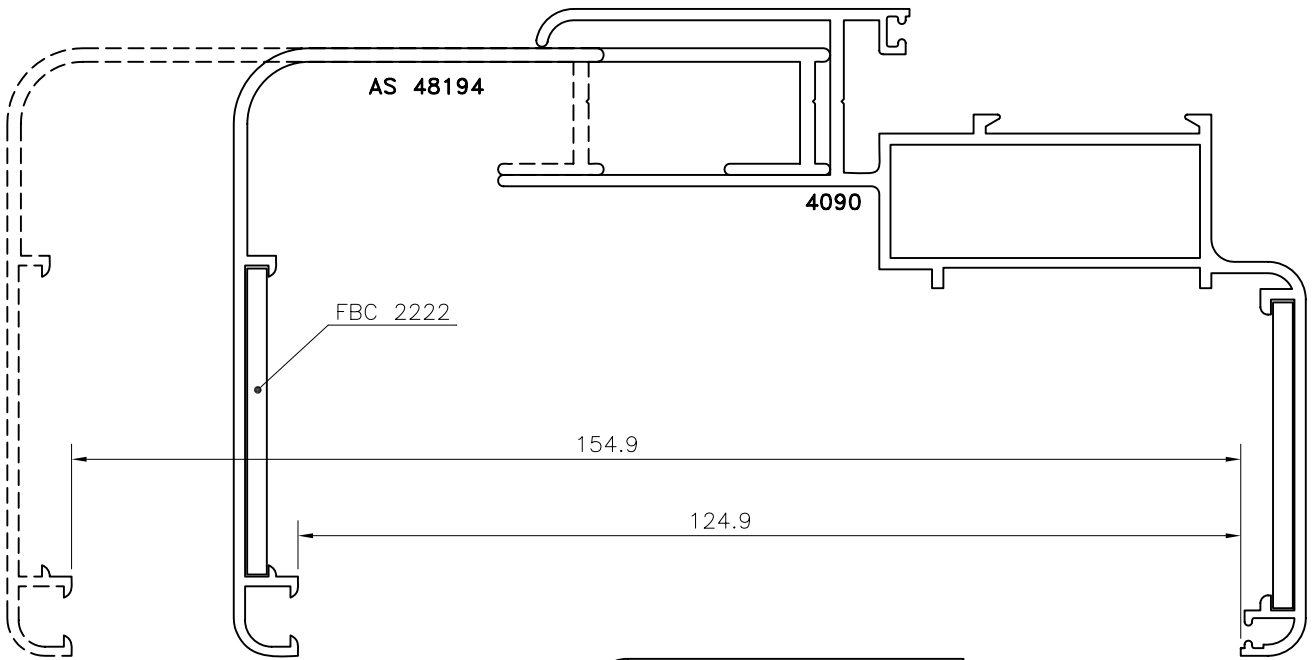
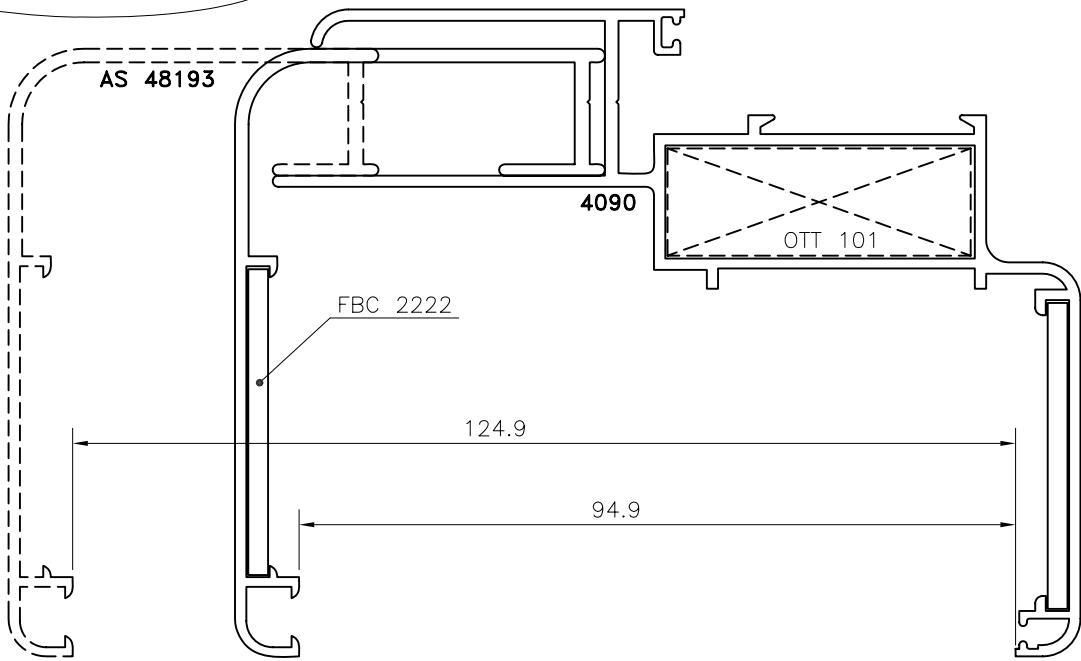
FT45 - Nodi



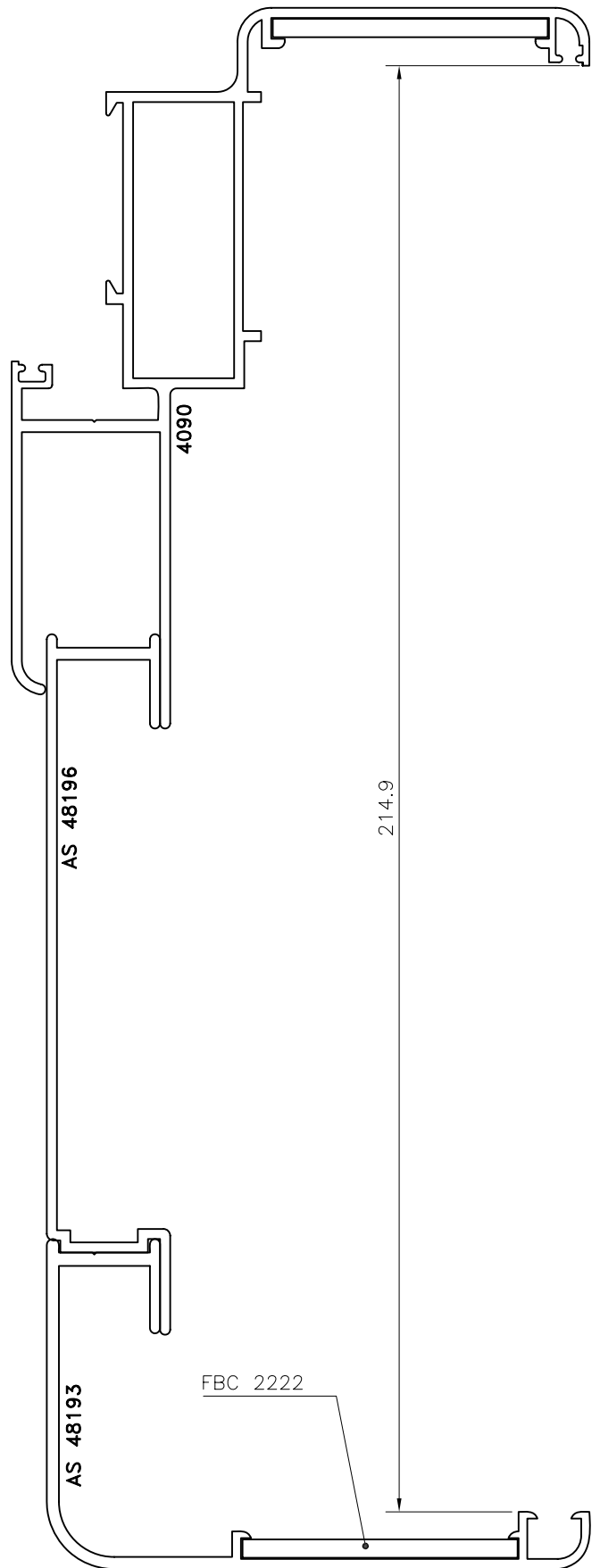
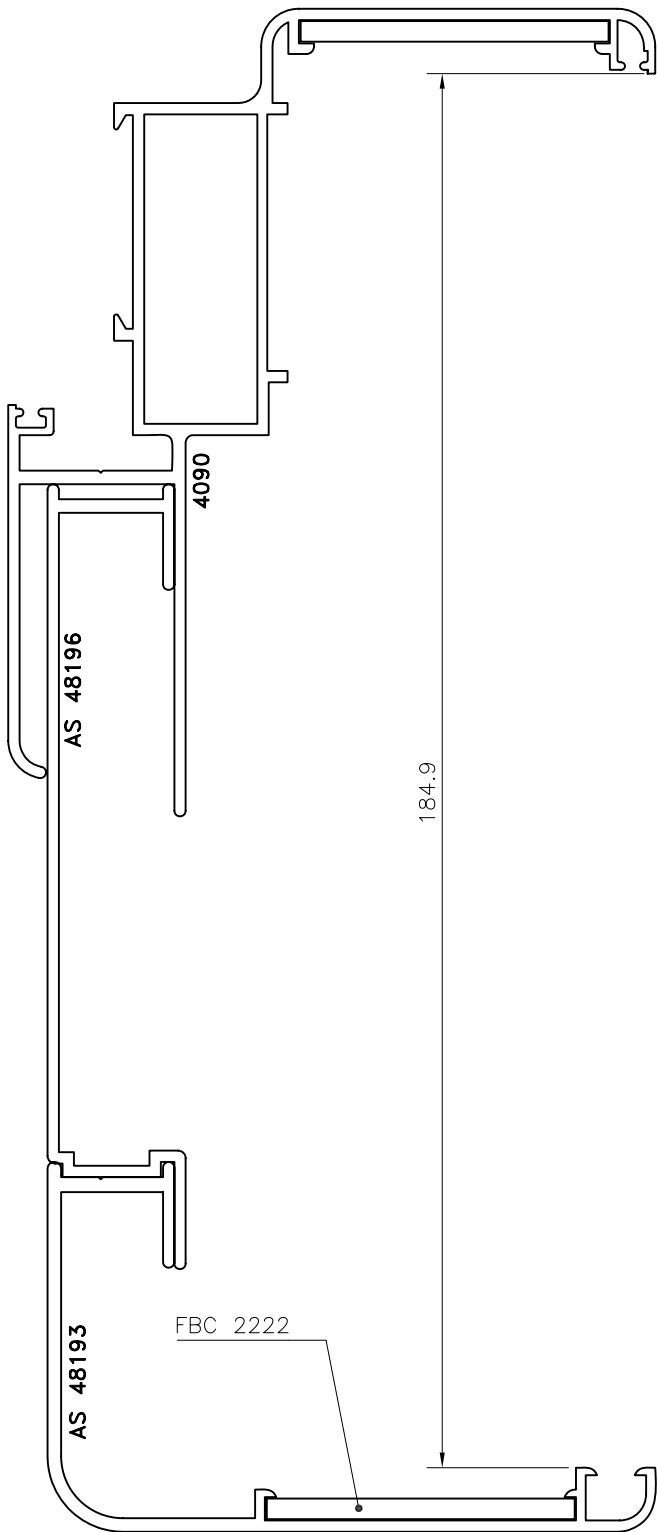
FT45 - Nodi



FT45 - Nodi



FT45 - Nodi





IO SONO IL TUO SERRAMENTO

10148 Torino – Via Reiss Romoli, 267 – Tel. 011/22.50.211 – Fax. 22.50.290
<http://www.fresialluminio.it> e-mail global@fresialluminio.it